

SCALE MODELS

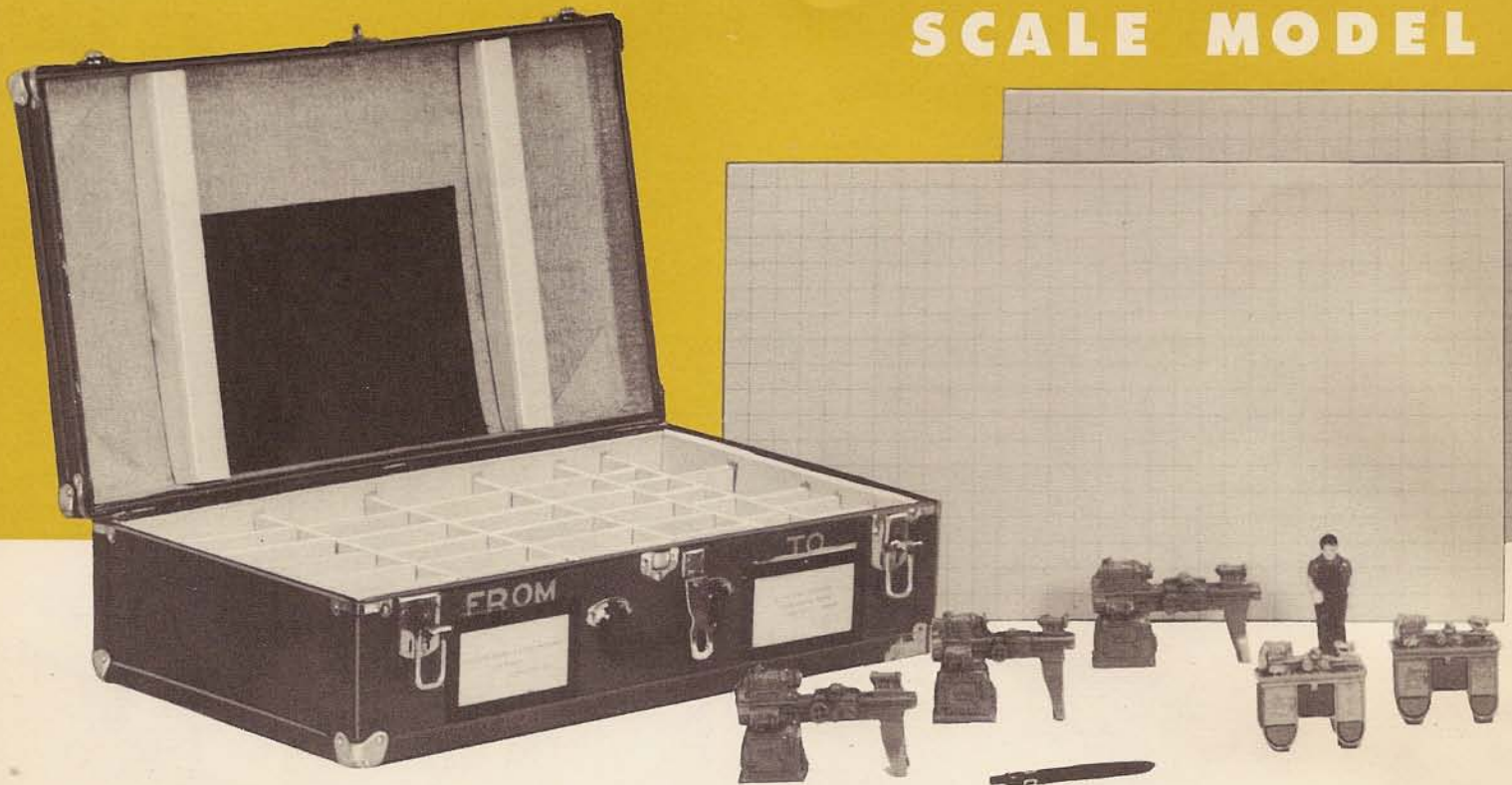
to help you plan your new shop

Use this three-dimensional scale model layout kit to simplify your problems when planning your new shop. We shall be glad to loan it to you without charge or obligation of any kind.

Accurately scaled $\frac{3}{4}$ inch to the foot, these realistic models reproduce our entire line of precision machine tools. When arranged on the floor panels, which are ruled to the same scale, they give a clear conception and accurate preview in miniature of your new shop.

Several models of each machine are included in this kit so that you can effectively plan a modern, efficient and attractive shop of the size you need. With study and simple rearrangement of the models you can easily work out the best possible use of available floor space and obtain the greatest convenience and safety for employees or students.

SCALE MODEL S



USE THESE SCALE MODEL MACHINE TOOLS TO GET AN ACCURATE PREVIEW OF YOUR NEW SHOP

*T*HIS handy kit of scale model machine tools offers helpful assistance of a tangible nature in deciding on a definite plan for your new shop. It comes to you in the compact case shown above, as a loan, and may be kept a reasonable length of time.

Nine different scale models representing our line of machine tools have been produced as shown at the right. A number of models of each machine are included in the kit to aid in setting up a complete model of your proposed shop with the best possible arrangement of machines for their most efficient use.

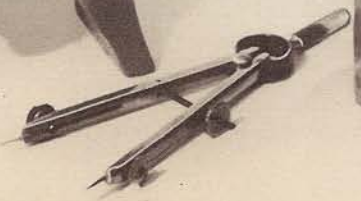
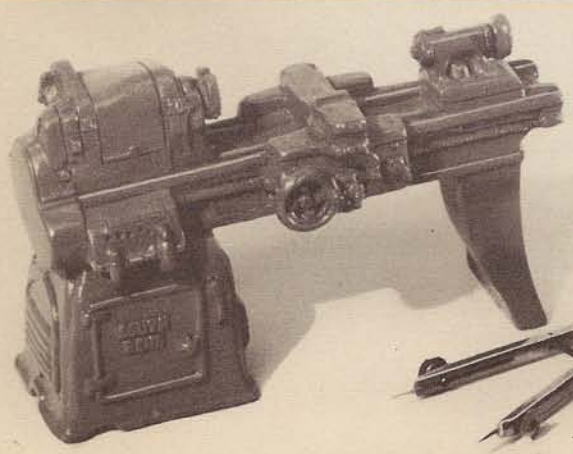
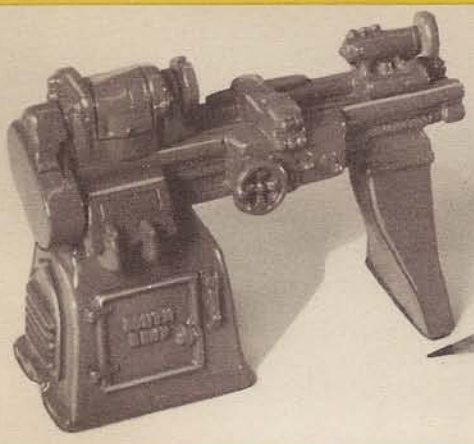
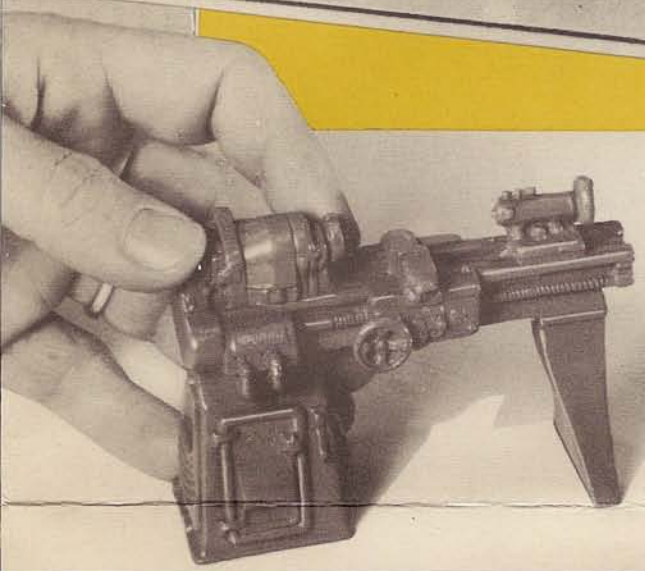
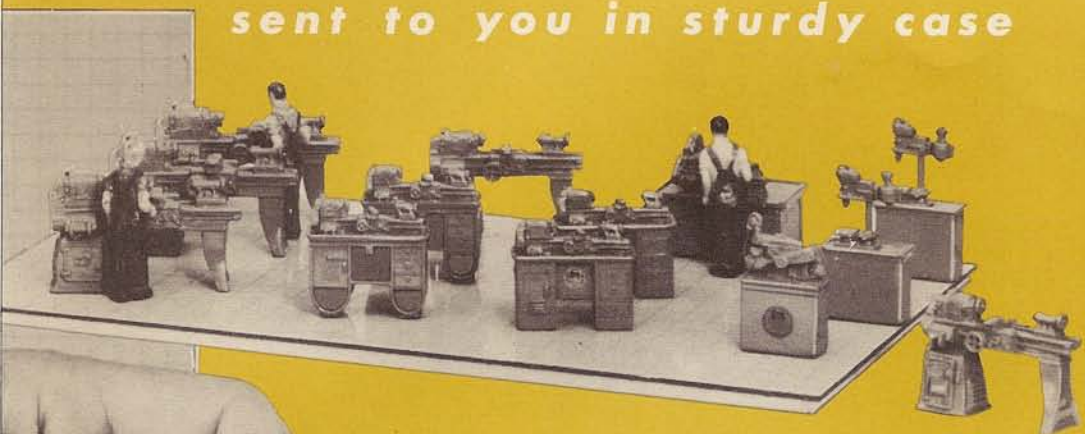
Put your shop layout on the planning boards furnished with the kit. Measure your floor space and draw its outlines to scale with the grease pencil supplied with the scale floor panels. Select the models of the machines you will need and arrange to their best advantage within the outlines of your floor plan. Easily laid out in this manner an accurate scale model of your entire shop may be set up on your desk top where it can be seen at a glance or carefully studied for the most efficient use of the floor space and best arrangement of the machines selected.

It is much quicker, easier and less costly to move these models around than it will be to shift machines after installation. Fill out the order form on the back page and let the scale model kit help get the plans for your new shop under way.

SHOP PLANNING KIT

sent to you in sturdy case

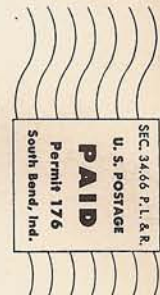
The shop planning kit, shown at the left, contains an assortment of scale models of South Bend machine tools and three planning boards accurately scaled $\frac{3}{4}$ inch to the foot. A grease pencil is included as an aid in drawing the floor plan of your shop accurately to scale on the planning boards, which are large enough for a room up to 31 ft. x 54 ft.



SOUTH BEND LATHE WORKS
425 East Madison Street
SOUTH BEND 22, INDIANA, U.S.A.

PLEASE NOTE: If you received more than one copy of this Bulletin, PLEASE tear off and return to us the address section. We shall appreciate your cooperation and you will be assured of receiving future copies of our Catalogs and Bulletins. THANK YOU.

POSTMASTER: Form 3547 requested.



BULLETIN 5301

3 DIMENSIONAL SHOP PLANNING



ORDER FORM

SOUTH BEND LATHE WORKS
SOUTH BEND 22, INDIANA

Date _____

Please ship your Shop Model Kit to address below, express collect. I wish to borrow the kit for approximately _____ days, and agree to return it to you, express prepaid, at the end of that time. Shop being planned is to be located at _____
I understand there is to be no charge for the loan of this kit, other than the transportation costs which I am to pay.

Name of organization _____

Street address _____

City _____ State _____

By _____ Position _____

Should you wish to keep one or more of the models you may for \$1.00 each.