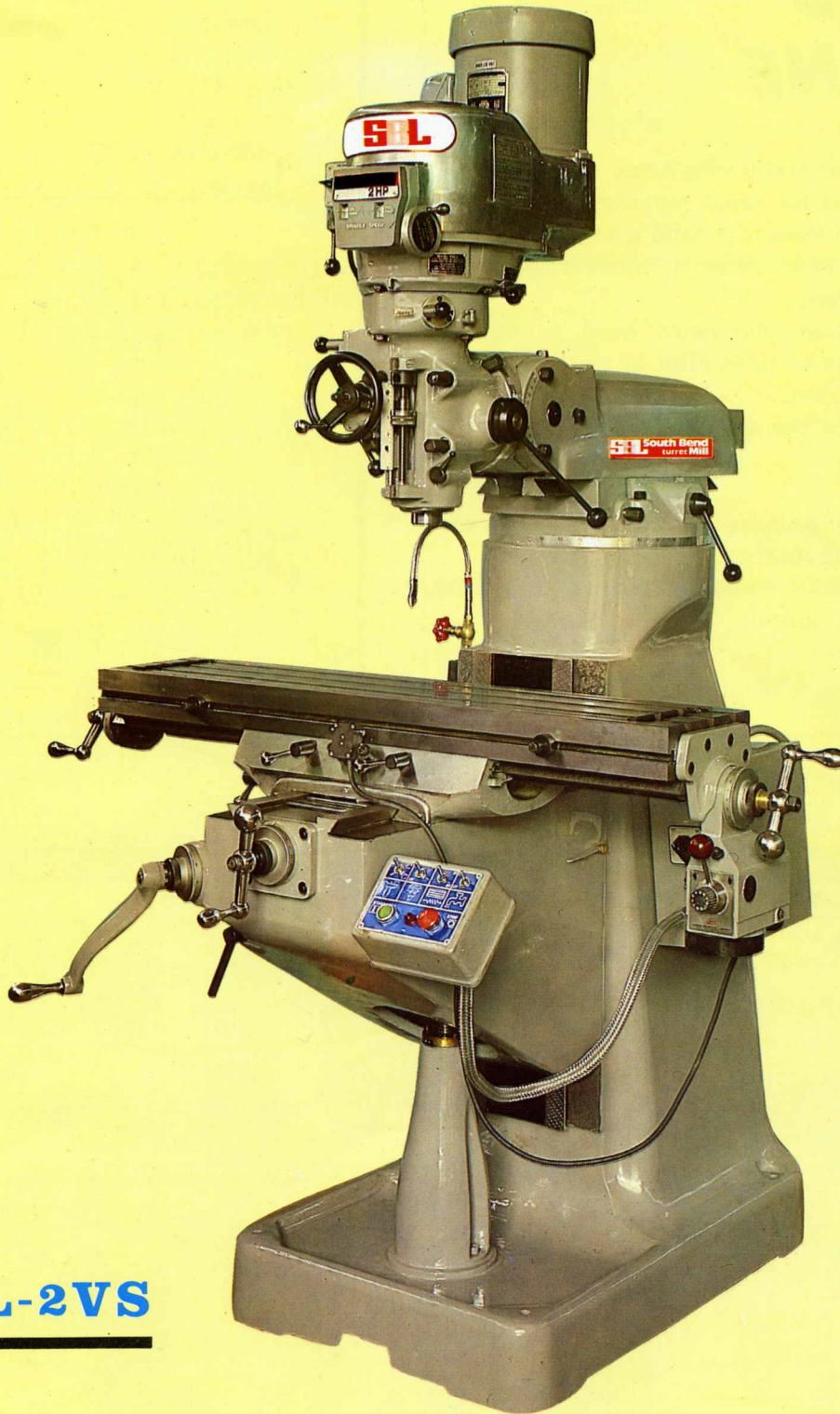


S&L South Bend Lathe

TURRET MILLING MACHINE

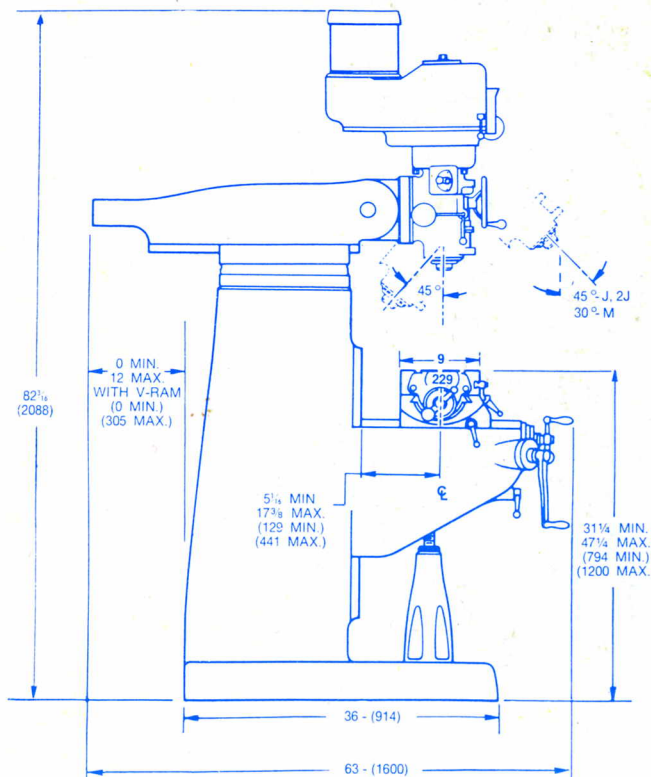


MODEL-2VS

South Bend[®]

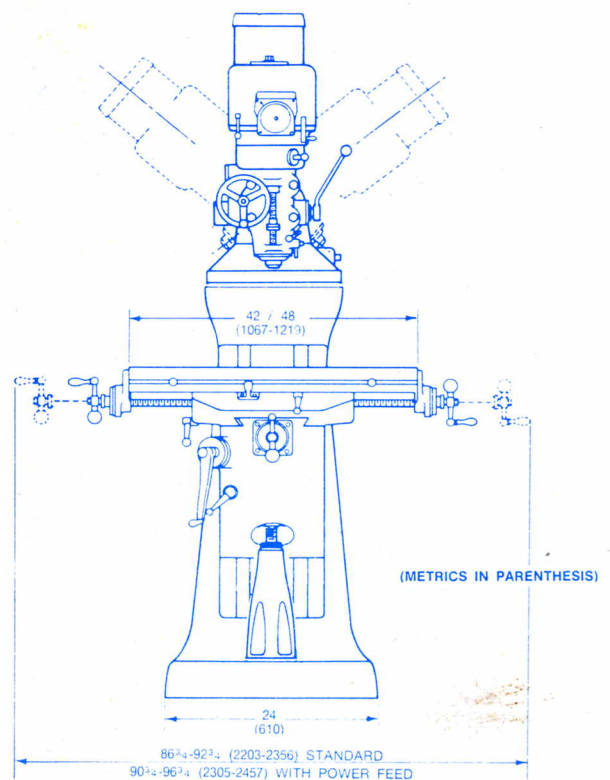
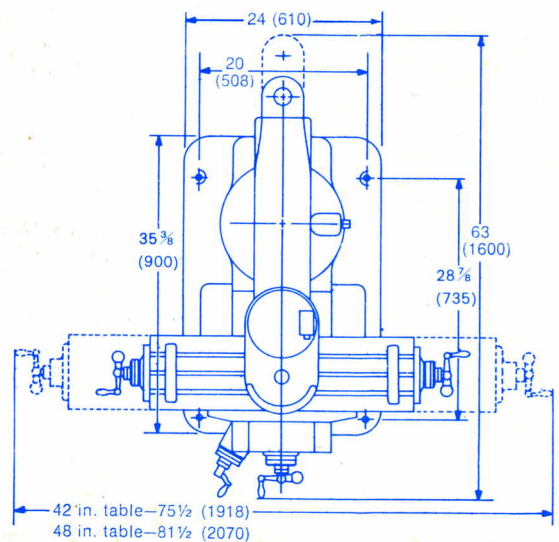
TURRET MILLING MACHINE

- 2 H.P. milling, drilling and boring head.
- Hand lever provided for rapid movement of spindle. Slow movement by means of a hand wheel.
- Angular positioning in all planes is obtained through an integral worm and gear.
- Precision construction eliminates need to recheck squareness of spindle to table after in and out or rotational movement of ram.
- Extreme accuracy of the spindle, true running within 0.0002" (0.005mm).
- R-8 spindle taper.
- Equipped with reversible switch for both clockwise and counterclockwise rotation.
- Power feed per spindle revolution: .0015, .003, .006, inch (.038, .076, .152mm).
- One shot lubrication.



2S SPEED RANGE
80-2720 rpm

2VS SPEED RANGE
infinite variable
60-4200 rpm



SPECIFICATIONS

All dimensions in inches (metrics in parentheses)

Range

Table travel (X-axis)	30 in. (762mm) or
With 48" Table,	36 in. (914mm)
Saddle travel (Y-axis)	12 in. (305mm)
Quill travel	5 in. (127mm)
Knee travel (Z-axis)	16 in. (406mm)
Ram travel	12 in. (305mm)
Throat distance (min.)	6 $\frac{3}{4}$ in. (171mm)
(max.)	18 $\frac{3}{4}$ in. (476mm)
Table to spindle nose	
gage line (min.) R8 Taper	2 $\frac{1}{2}$ in. (64mm)
Max. weight of workpiece	750 lbs. (341kg)

Table

Overall sizes	9x42 in. (229x1067mm)
	9x48 in. (229x1219mm)
T-Slots	3 on 2 $\frac{1}{2}$ in. (64mm)
	centers
T-Slot size	5/8 in. (16mm)
Height above floor (max.)	47 $\frac{1}{4}$ in. (1200mm)

Spindle

Power rating	2 hp (1.5kW)
Taper	R-8
Speed range	

★ 2S SPEED RANGE

80, 135, 210, 325, 660, 1115, 1750, 2720 rpm

★ 2VS SPEED RANGE

low—infinately variable	60-500 rpm
high—infinately variable	500-4200 rpm

Controlled downfeed range—	.0015 in. (0.038mm),
manual adjust	.003 in. (0.076mm),
	.006 in. (0.152mm)/rev.

Drilling capacity

mild steel (manual)	3/4 in. (19mm)
mild steel (power)	3/8 in. (10mm)
Milling capacity—mild steel	2 cu. in./min. (32cc/min.)
Boring range—mild steel	To 6 in. (152mm) dia.
Spindle diameter	1 $\frac{7}{8}$ in. (48mm)
Quill diameter	3 $\frac{3}{8}$ in. (86mm)

Milling

Feedrate(X-axis)	3/4-35 ipm
	(19-889mm/min.)

(Power optional. Power feed reduces longitudinal travel by 3.5")

Space and weight

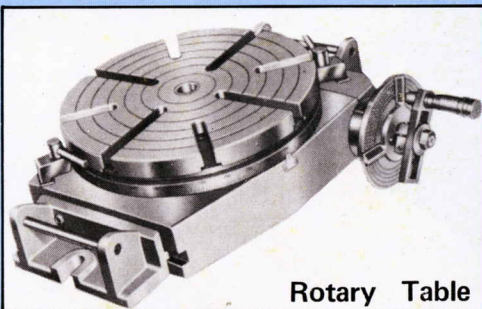
Floor area	7x10 ft. (2.1x3.1m)
Height	82 $\frac{3}{16}$ in. (2.1m)
Net weight	1950 lbs. (885kg)
Shipping weight	2180 lbs. (989kg)

Power

Electrical supply—	230/460V
60 Hz, 3 phase	

NOTE: Specifications subject to change without prior notice.

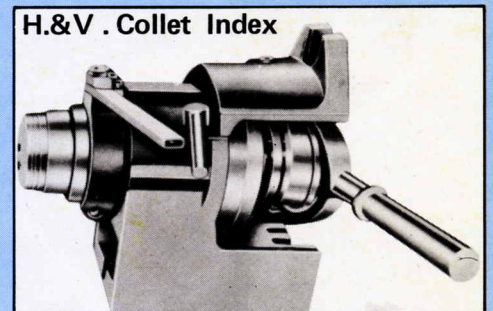
SPECIAL ACCESSORIES



Rotary Table



Dividing Head



H.&V. Collet Index

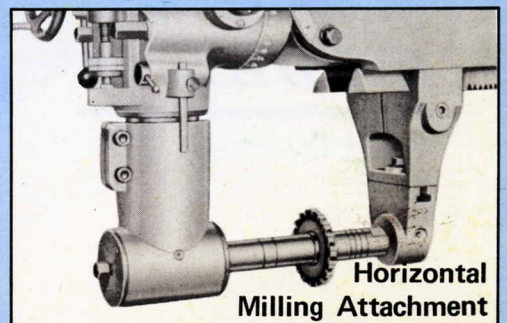
■ Coolant System



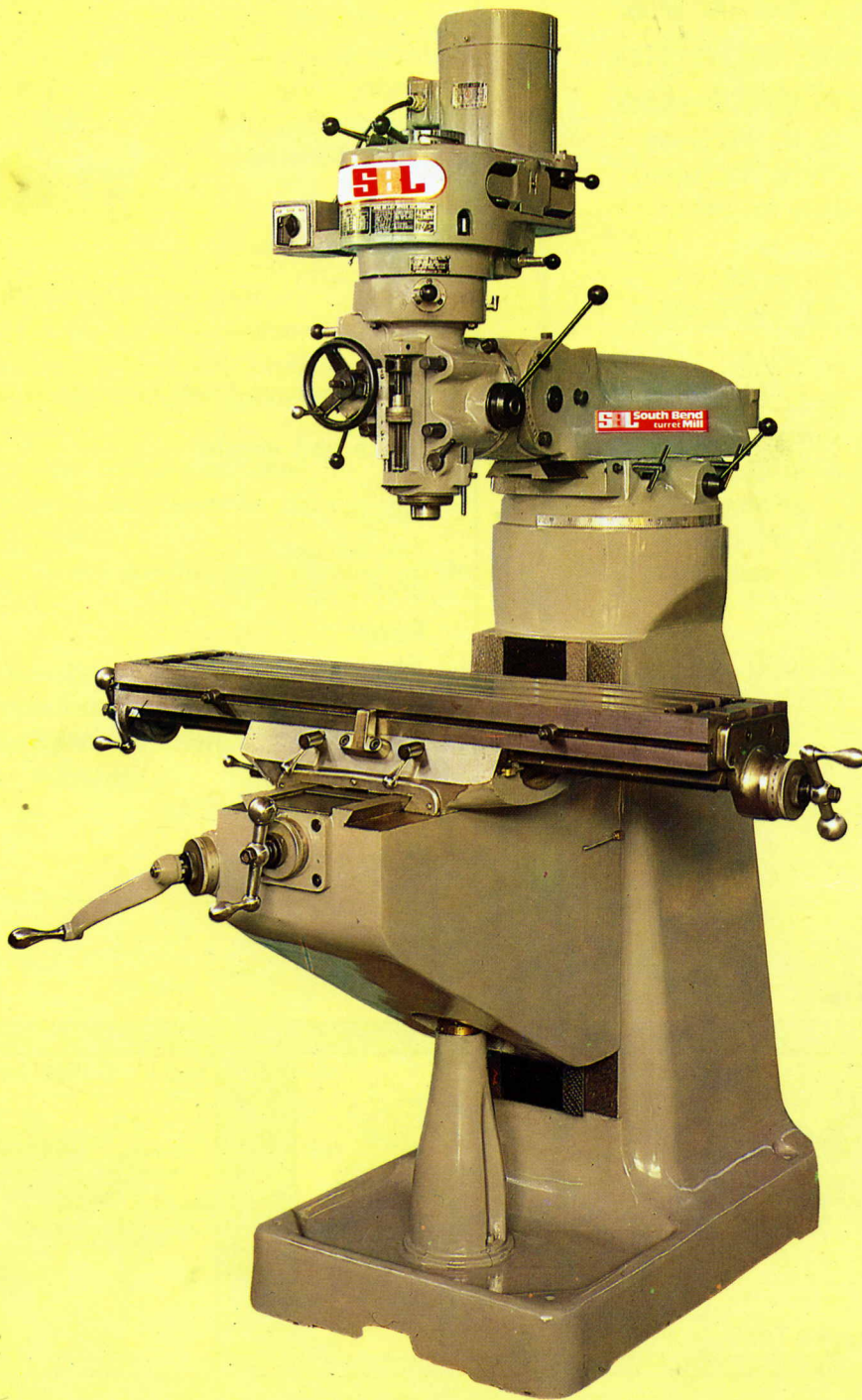
Infinitely Variable Power Feed



Riser Block



Horizontal Milling Attachment



MODEL-2S

Distributed by

South Bend
SBL Lathe

400 WEST SAMPLE STREET SOUTH BEND, INDIANA 46625

PHONE 219/289-7771

TELEX 25-8471 SBN LATHE SBN