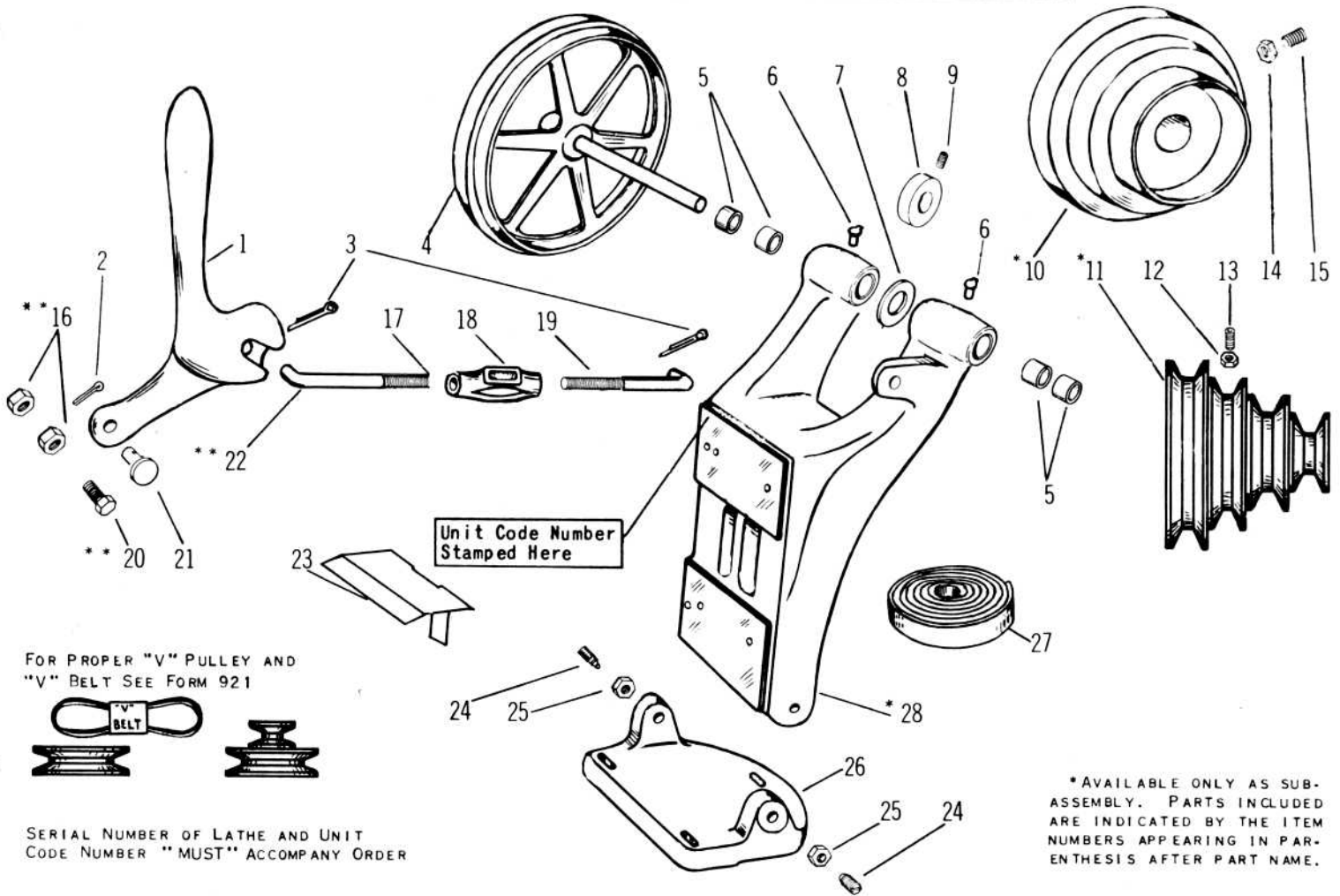


9" & 10-K HORIZONTAL DRIVE UNIT



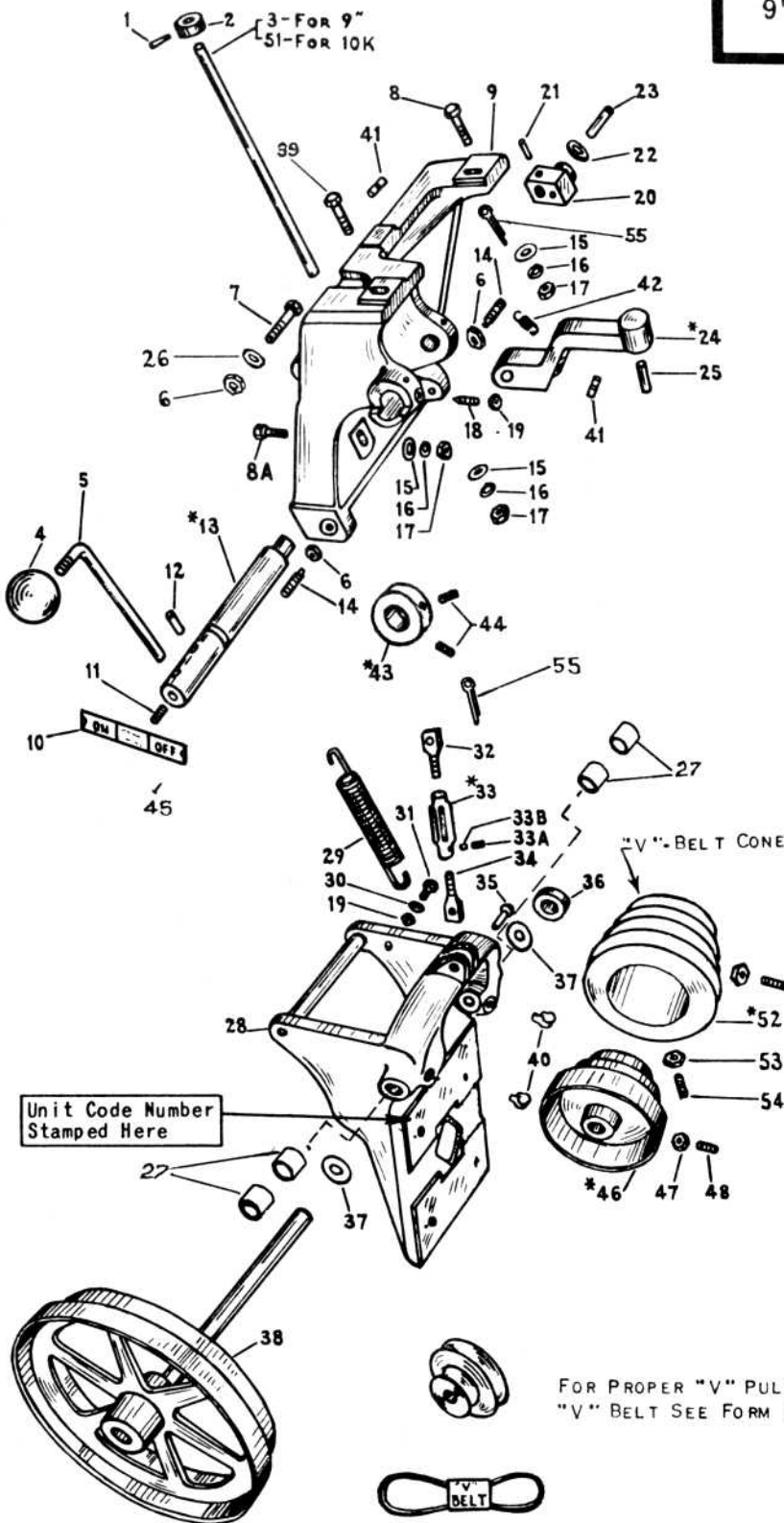
\* AVAILABLE ONLY AS SUB-ASSEMBLY. PARTS INCLUDED ARE INDICATED BY THE ITEM NUMBERS APPEARING IN PARENTHESIS AFTER PART NAME.

\*\*For 10-K Gap Bed Lathes Only

ITEM NO.	PART NO.	PART NAME	ITEM NO.	PART NO.	PART NAME
1	PT1945N1	Lever	16	139 x 27	Hex Nut
2	170 x 206	Cotter Pin	17	PT1946N1	R. H. Rod
3	170 x 206	Cotter Pin	18	PT1948N1	Turnbuckle
4	AS1960N3	Shaft & Pulley	19	PT395N1	L. H. Rod
5	PT3658R1	Oilite Bearing	20	112 x 224	Hex. Cap Screw
6	155 x 38	Oiler	21	PT1949NK3	Pin
7	PT1676NK1	Washer	22	PT1946K1-G	R. H. Rod
8	AS735NR1	Collar (9)	23	PT1373	Chip Guard
9	120 x 206	Screw	24	PT243NR1	Pivot Screw
10	*AS103NK1	Cone (14, 15)	25	139 x 29	Hex Nut
11	*AS431NK2	Cone (12, 13)	26	PT1944N1	Base
12	139 x 25	Hex Nut	27	CE2323N	Belt 1-Ply
13	120 x 112	Screw	28	*AS1940N3	Standard (6,5)
14	139 x 27	Hex Nut			
15	120 x 212	Screw			

9" & 10K UNDERNEATH DRIVE UNIT

Serial Number of Lathe and Unit Code Number MUST Accompany Order



ITEM NO.	PART NO.	PART NAME
1	120X 206	SCREW
2	PT2611NK1	COLLAR
3	PT2608N1	LOCK PIN
4	PT406K&FMI	KNOB
5	PT2609NK1	HANDLE
6	139X29	NUT
7	112X336	BOLT
8	112X224	BOLT
8A	542X406	BOLT
9	PT2640NK2	CRADLE SUPPORT PLATE
10	AS417NK1	PLATE
11	120X106	SCREW
12	160X116	PIN
13	*AS2605NK1	SHAFT (11-12-20 21-22-23)
14	PT390NK2	PIVOT SCREW
15	167X4	WASHER
16	180X302	LOCK WASHER
17	138X27	NUT
18	121X112	SCREW
19	139X25	NUT
20	PT2603NK1	CRANK
21	168X410	TAPER PIN
22	161X17	WASHER
23	PT2604NK1	RELEASE PIN
24	*AS2607NK2	BRACKET (25)
25	PT1824-3	PIN
26	161X 21	WASHER
27	PT36 58-1	Oilite Bearing
28	PT2540NK3	CRADLE
28A		
29	PT2638NT1	SPRING
30	161X14	WASHER
31	112X116	SCREW
32	PT2600NK1	R. H. SCREW
33	AS2606NK1	TURNBUCKLE(33,34)
33A	120X6	SCREW
33B	PT1081NT1	SHOE
34	PT2601NK1	L. H. SCREW
35	PT1949NK2	CLEVIS PIN
36	AS735NR1	COLLAR
37	PT1676NK1	WASHER
38	AS1960N3	SHAFT & PULLEY
39	112X232	BOLT
40	155X44	OILER
41	PT2615NK1	PIN
42	PT2614NK1	SPRING
43	*AS2613NK1	COLLAR (44)
44	120X108	SCREW
45	144 X1	SCREW
46	*AS103NK1	C. S. CONE (47-48)
47	139X27	NUT
48	120X212	SCREW
49		
50		
51	PT2608KI	COVER LOCK ROD
52	*AS431NK1	C. S. CONE(53-54)
53	139X25	NUT
54	120 X112	SCREW
55	170X 206	C. PIN

\*AVAILABLE ONLY AS SUB-ASSEMBLY. PARTS INCLUDED ARE INDICATED BY THE ITEM NUMBERS APPEARING IN PARENTHESIS AFTER PART NAME.