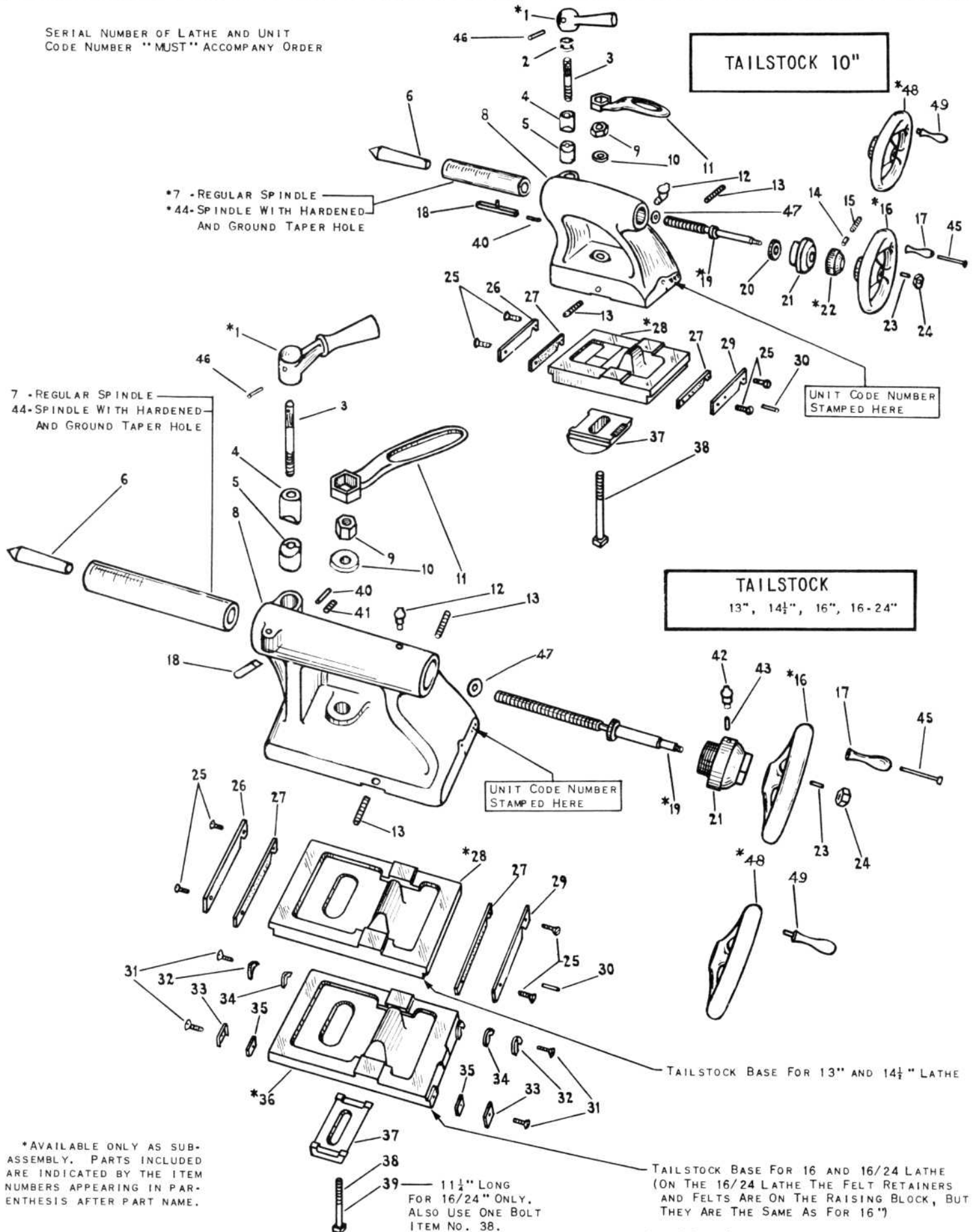


SERIAL NUMBER OF LATHE AND UNIT CODE NUMBER **MUST** ACCOMPANY ORDER



*7 -REGULAR SPINDLE
 *44-SPINDLE WITH HARDENED-
 AND GROUND TAPER HOLE

TAILSTOCK 10"

UNIT CODE NUMBER
 STAMPED HERE

7 -REGULAR SPINDLE
 44-SPINDLE WITH HARDENED-
 AND GROUND TAPER HOLE

TAILSTOCK
 13", 14 1/2", 16", 16-24"

UNIT CODE NUMBER
 STAMPED HERE

TAILSTOCK BASE FOR 13" AND 14 1/2" LATHE

TAILSTOCK BASE FOR 16 AND 16/24 LATHE
 (ON THE 16/24 LATHE THE FELT RETAINERS
 AND FELTS ARE ON THE RAISING BLOCK, BUT
 THEY ARE THE SAME AS FOR 16")

*AVAILABLE ONLY AS SUB-
 ASSEMBLY. PARTS INCLUDED
 ARE INDICATED BY THE ITEM
 NUMBERS APPEARING IN PAR-
 ENTESISIS AFTER PART NAME.

39 — 11 1/2" LONG
 FOR 16/24" ONLY.
 ALSO USE ONE BOLT
 ITEM NO. 38.

See List On Reverse Side

ITEM NO.	PART NAME	10"		13"		14-1/2"		16" & 16/24"	
		PART NO.		PART NO.		PART NO.		PART NO.	
1	BINDING LEVER (2-3-46)	*AS54KR3		*AS54T1		*AS54FH1		*AS54FH1	
2	ORDER ITEM 1	PT293NR2		
3	ORDER ITEM 1	PT206KR3		PT206T2		PT206FH2		PT206FH2	
4	UPPER PLUG	PT248KR3		PT248T2		PT248F2		PT248H2	
5	LOWER PLUG	PT249KR3		PT249T2		PT249F2		PT249H2	
6	T.S. CENTER	CE2401		CE2402		CE2402		CE2402	
7	T.S. SPINDLE (18)	*AS201KR2		PT201T1		PT201F1		PT201H1	
8	T.S. TOP	PT50R2		PT50T1		PT50F1		PT50H1	
9	CLAMP NUT	PT283R1		PT283T1		PT283FH1		PT283FH1	
10	WASHER	161 x 27		PT236T1		PT236FH1		PT236FH1	
11	T.S. WRENCH	CE2653R		CE2653T		CE2653FH		CE2653FH	
12	OILER	PT2677NR1		155 x 23		155 x 23		155 x 23	
13	SET-OVER SCREW	PT278R1		PT278TF1		PT278TF1		PT278H1	
14	SHOE	PT1076TH1		
15	SCREW	122 x 104		
16	T.S. HANDWHEEL (17-45)	*AS1262R1		*AS1262TH1		*AS1262TH1		*AS1262TH1	
17	HANDLE	PT1492		PT1493		PT1493		PT1493	
18	KEY	AS285KR1		PT286T1		PT286F1		PT286H1	
19	T.S. SCREW (47)	*AS226R3		*AS226T2		*AS226F2		*AS226H2	
20	FELT WASHER	PT288NR1		
21	T.S. NUT	PT52R2		PT52T1		PT52F1		PT52H1	
22	GRAD. DIAL (14-15)	*AS287R1		
23	PIN	160 x 19		160 x 21		160 x 21		160 x 21	
24	NUT	136 x 25		136 x 29		136 x 29		136 x 29	
25	SCREW	1164-1		1164-1		1164-1		
26	RETAINER (FRONT)	PT581R2		PT581T2		PT581F2		
27	FELT WIPER	PT582R1		PT582T1		PT582F1		
28	T.S. BASE (25-26-27-29-30)	*AS51R2		*AS51T2		*AS51F2		
29	RETAINER (REAR)	PT580R2		PT580T2		PT580F2		
30	PIN	160 x 18		160 x 18		160 x 18		
31	SCREW	
32	RETAINER (LEFT)		103 x 212	
33	RETAINER (RIGHT)		PT581H1	
34	FELT WIPER (LEFT)		PT580H1	
35	FELT WIPER (RIGHT)		PT583H1	
36	T.S. BASE (31-32-33-34-35)		PT582H1	
37	T.S. CLAMP	PT56R1		PT56T1		PT56F1		*AS51H2	
38	CLAMP BOLT	143 x 317		143 x 422		143 x 524		PT56H1	
39	CLAMP BOLT		143 x 526	
40	PIN	160X50		160 x 48		160 x 50		143 x 548	
41	SCREW		122 x 604		122 x 604		160 x 48	
42	OILER		155 x 23		155 x 23		160 x 80	
43	OIL WICK		256 x 7		256 x 7		155 x 23	
44	T.S. SPINDLE (18)	CL3875R		CL3875T		CL3875F		256 x 7	
45	STUD	PT1242		PT1243		PT1243		CL3875H	
46	ORDER ITEM 1	160 x 255		160 x 251		160 x 60		CL3875H	
47	RUBBER WASHER	PT3554NR1		PT3554TH1		PT3554TH1		PT1243	
48	T.S. HANDWHEEL (49)	*AS53R1		*AS53TH1		*AS53TH1		160 x 60	
49	HANDLE	PT1482		PT1483		PT1483		PT3554TH1	