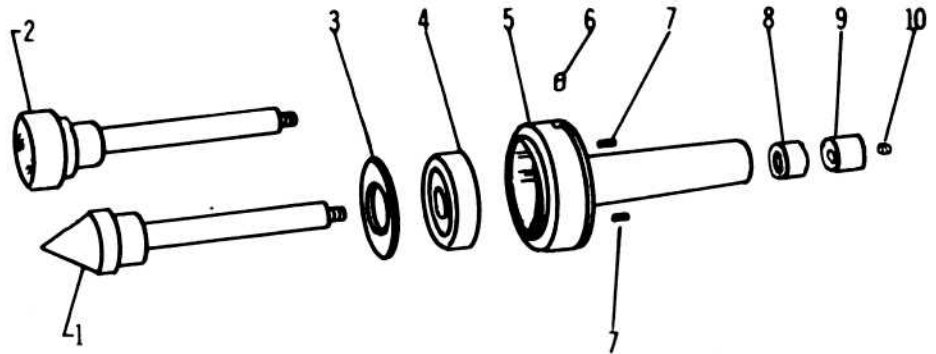
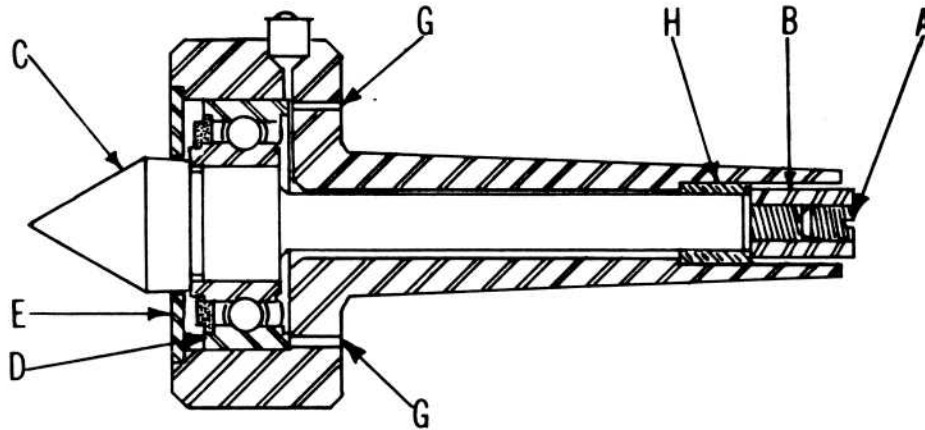


BALL BEARING LIVE CENTERS



ITEM NO.	9" & 10" PART NO.	13", 14 1/2" & 16" PART NO.	PART NAME
1	PT3276NR1	PT3276TH1	SPINDLE POINT
2	PT3281NR1	PT3281TH1	SPINDLE HOLLOW
3	PT3277NR1	PT3277TH1	PROTECTING COLLAR
4	PT502NH1	PT3280TH1	BALL BEARING
5	PT3275NR1	PT3275TH1	BODY
6	155 x 17	155 x 17	OILER
7	-----	120 x 904	SET SCREW
8	PT3278NR2	PT3278TH2	REAR BUSHING
9	PT3279NR1	PT3274TH1	TAKE-UP NUT
10	120 x 1104	120 x 1104	SET SCREW



LUBRICATION

Use our Cat. No. CE1602 Machine Oil or equal. No. 2 M.T. Center Bearings are sealed but No. 3 M.T. Center Bearings are not: therefore should be periodically repacked with grease.

ADJUSTMENT

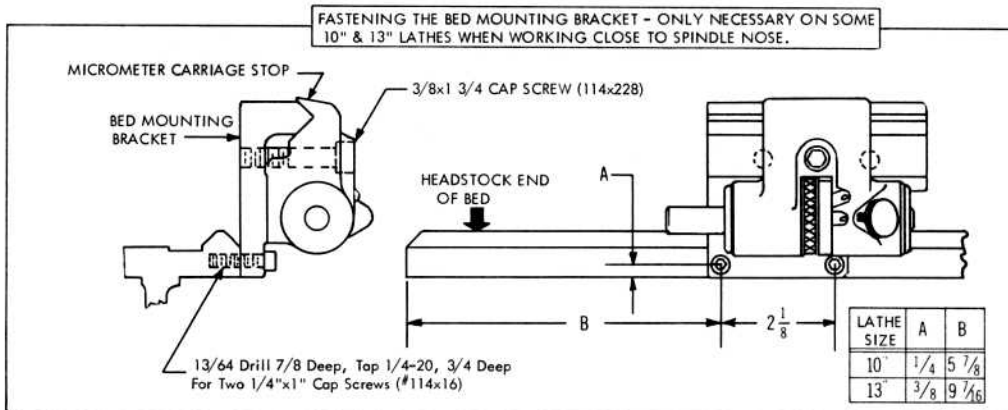
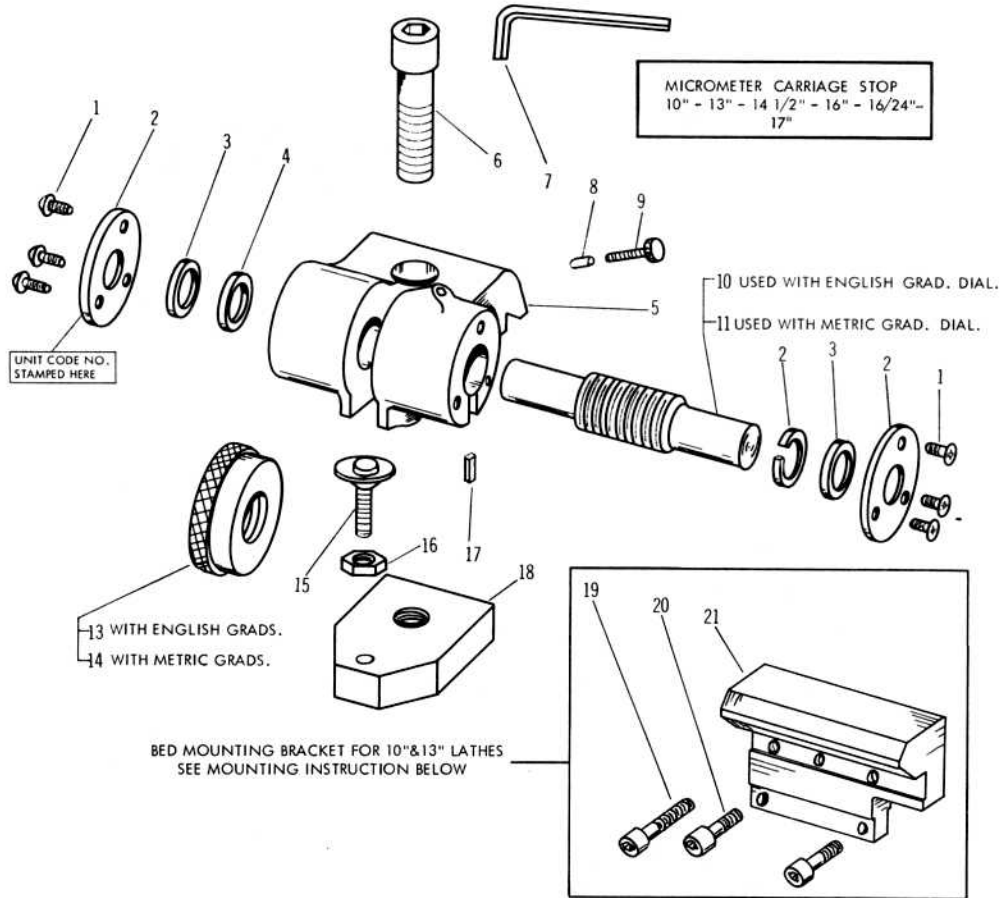
Screw Take-up Nut "B" tight so Spindle can hardly be turned by hand. Back up fraction of a turn so the Spindle will just barely turn freely. Proper tension is important. Cannot be too tight or loose. Lock the set screw "A" snug, but not too tight.

TO DISASSEMBLE

Loosen set screw "A" and remove Take-up Nut "B". Drive out Spindle "C" along with bearing "D" and collar "E" with a punch through the two holes as shown at "G". (Drive out with two set screws on No. 3 M.T.) If necessary to remove rear bushing "H" drive out by inserting bar into front end of body. Bar diameter must be just slightly under hole size of Body.

TO ASSEMBLE

Flush center of body with mineral spirits or equal before assembling. Drive in rear bushing, if it has been removed. Place Spindle into Body, tapping lightly on outer bearing race if necessary. Press on protecting collar.



ITEM NO.	PART NAME	10" PART NO.	13" PART NO.	14 1/2" PART NO.	16", 16 1/4" & 17" PART NO.
1	PHILLIP SCREW	104 x 206	104 x 206	104 x 206	104 x 206
2	COVER PLATE	PT1209NT1	PT1209NT1	PT1209FH1	PT1209FH1
3	BUSHING	PT1206NT1	PT1206NT1	PT1206FH1	PT1206FH1
4	FELT WASHER	PT1207NT1	PT1207NT1	PT1207FH1	PT1207FH1
5	MICRO STOP FRAME				
6	CAP SCREW	114 x 236	114 x 236	114 x 444	114 x 444
7	HEX. WRENCH	CE2389			
8	SHOE	PT1083NT1	PT1083NT1	PT1083FH1	PT1083FH1
9	LOCK SCREW	PT1204NT2	PT1204NT2	PT1204FH2	PT1204FH2
10	MICRO SHAFT (ENGLISH)	PT1202RT1	PT1202RT1	PT1202FH2	PT1202FH2
11	MICRO SHAFT (METRIC)	PT2271RT1	PT2271RT1	PT2271FH1	PT2271FH1
12	FELT WASHER (SLOTTED)	PT1208NT1	PT1208NT1	PT1208FH1	PT1208FH1
13	MICRO STOP DIAL (ENGLISH)	PT1203NT2	PT1203NT2	PT1203FH2	PT1203FH2
14	MICRO STOP DIAL (METRIC)	PT2270NT1	PT2270NT1	PT2270FH1	PT2270FH1
15	CLAMP SCREW	PT1211RT1	PT1211RT1	PT1211FH1	PT1211FH1
16	JAM NUT	137 x 25	137 x 25	137 x 25	137 x 25
17	KEY	PT1210NH1	PT1210NH1	PT1210NH1	PT1210NH1
18	CLAMP	PT1201R2	PT1201T2	PT1201FH2	PT1201FH2
19	CAP SCREW	114 x 228	114 x 228		
20	CAP SCREW	114 x 6	114 x 6		
21	BED MOUNTING BRACKET	PT1212R1	PT1212R1		

SERIAL NUMBER OF LATHE AND UNIT CODE NUMBER MUST ACCOMPANY ORDER.