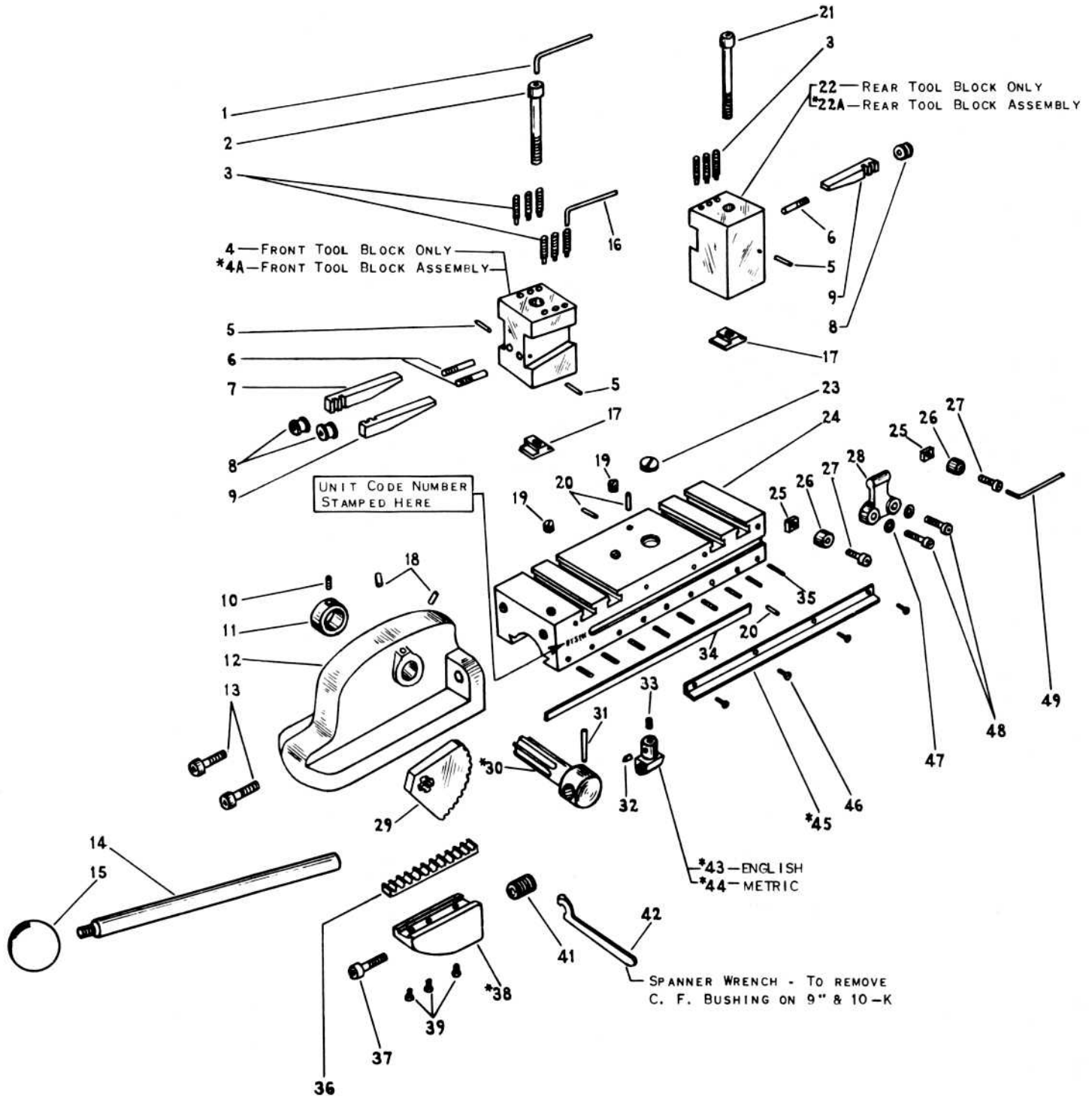


H. L. DOUBLE TOOL CROSS SLIDE
FOR 9", 10-K, 10" REG.



ITEM NO.	PART NAME	9"		10-K		10" REG.	
		PART NO.		PART NO.		PART NO.	
1	WRENCH	CE2389		CE2389		CE2389	
2	HOL. HD. CAP SCREW	114x244		114x252		114x244	
3	SET SCREW	121x116		121x116		121x116	
4	FRONT TOOL BLOCK	PT812NR2		PT812K1		PT812NR2	
4A	FRONT TOOL BLOCK ASSEM. (2-3-5-6-7-8-9-17)	*AS812NR2		*AS812K1		*AS812NR2	
5	PIN	160x21		160x21		160x21	
6	STUD SCREW	PT817NR1		PT817NR1		PT817NR1	
7	BLOCK GIB - LEFT	PT449NR1		PT449NR1		PT449NR1	
8	STUD SCREW NUT	PT818NR1		PT818NR1		PT818NR1	
9	BLOCK GIB - RIGHT	PT448NR1		PT448NR1		PT448NR1	
10	SET SCREW	121x5		121x5		121x5	
11	COLLAR	PT453NR1		PT453NR1		PT453NR1	
12	GEAR RETAINER	PT824NK1		PT824NK1		PT824R1	
13	CAP SCREW	114x216		114x216		114x216	
14	SHAFT LEVER	PT808NR1		PT808NR1		PT808NR1	
15	BAKELITE BALL	PT406K & FH1		PT406K & FH1		PT406K & FH1	
16	WRENCH	CE2385		CE2385		CE2385	
17	TEE SLOT NUT	PT741NR2		PT741NR2		PT741NR2	
18	OILER	155x17		155x17		155x17	
19	SET SCREW	122x706		122x706		122x706	
20	PIN	160x240		160x240		160x240	
21	HOL. HD. CAP SCREW	114x252		114x256		114x252	
22	REAR TOOL BLOCK	PT813NR2		PT813K1		PT813NR2	
22A	REAR TOOL BLOCK ASSEM. (3-5-6-8-9-17-21)	*AS813NR2		*AS813K1		*AS813NR2	
23	OIL PLUG	PT823NH1		PT823NH1		PT823NH1	
24	BASE	PT800NK3		PT800NK3		PT800NK3	
25	NUT	PT811NH1		PT811NH1		PT811NH1	
26	BUSHING	PT810NH1		PT810NH1		PT810NH1	
27	CAP SCREW	114x110		114x110		114x110	
28	STOP	PT809NK1		PT809NK1		PT809R1	
29	PINION SEGMENT	PT805NK1		PT805NK1		PT805R1	
30	SEGMENT SHAFT (10-11-31)	*AS807NR1		*AS807NR1		*AS807NR1	
31	TAPER PIN	168x210		168x210		168x210	
32	LOCK PIN	PT358NK1		PT358NK1		PT358NK1	
33	SET SCREW	PT359NK1		PT359NK1		PT359NK1	
34	BASE GIB	PT801NK1		PT801NK1		PT801R1	
35	SET SCREW	122x444		122x444		122x513	
36	RACK	PT820NK1		PT820NK1		PT820R1	
37	CAP SCREW	114x216		114x216		114x216	
38	RACK SUPPORT (36-37-39-40)	*AS804NK1		*AS804NK1		*AS804R1	
39	MACHINE SCREW	103x106		103x106		103x107	
40	PIN						
41	BUSHING	PT814NK1		PT814NK1		PT814R1	
42	WRENCH	CE2739		CE2739		- - - -	
43	C. F. NUT - ENGLISH (32-33)	*AS799NR1		*AS799NR1		*AS799NR1	
44	C. F. NUT - METRIC (32-33)	*AS2252NR1		*AS2252NR1		*AS2252NR1	
45	CHIP GUARD (46)	*AS821NK2		*AS821NK2		*AS821R2	
46	SCREW	101x106		101x106		101x106	
47	WASHER	161x11		161x11		161x11	
48	CAP SCREW	112x116		112x116		112x116	
49	WRENCH	CE2387		CE2387		- - - -	

* AVAILABLE ONLY AS SUB-ASSEMBLY. PARTS INCLUDED ARE INDICATED BY THE ITEM NUMBERS APPEARING IN PARENTHESIS AFTER PART NAME.

SERIAL NUMBER OF LATHE AND UNIT CODE NUMBER "MUST" ACCOMPANY ORDER