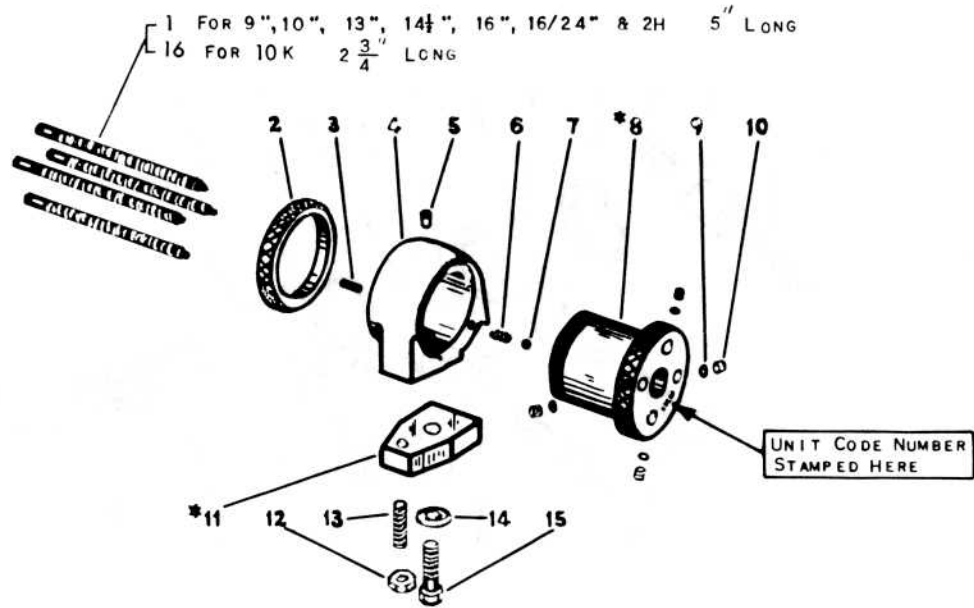


SERIAL NUMBER OF LATHE AND UNIT CODE NUMBER "MUST" ACCOMPANY ORDER

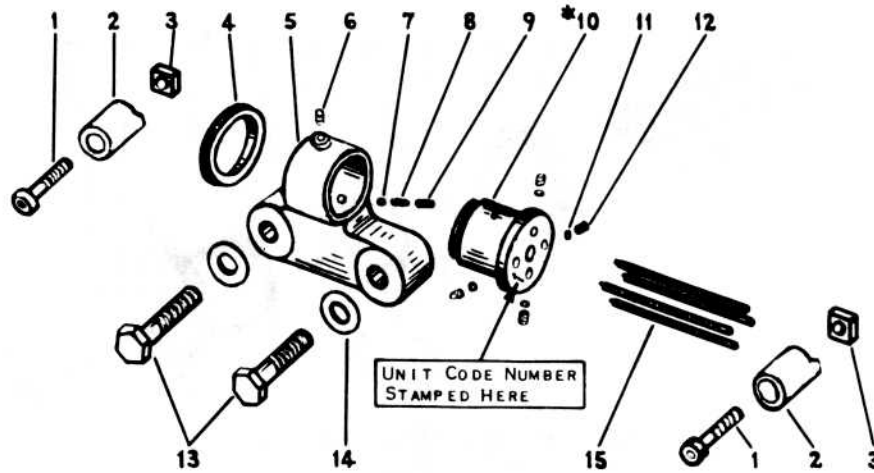


**FOUR POSITION CARRIAGE STOP**  
 FOR 9", 10K, 10", 13", 14 1/2", 16", 16/24" & 2H

\*AVAILABLE ONLY AS SUB-ASSEMBLY. PARTS INCLUDED ARE INDICATED BY THE ITEM NUMBERS APPEARING IN PARENTHESIS AFTER PART NAME.

ITEM NO.	PART NAME	9" & 10K		10"	13"	14 1/2", 16", 16/24" & 2H	
		PART NO.		PART NO.		PART NO.	
1	STOP SCREW	PT1219NH1		PT1219NH1		PT1219NH1	
2	TAKE UP NUT	PT1218NH1		PT1218NH1		PT1218NH1	
3	SET SCREW	122x108		122x108		122x108	
4	FRAME	WRITE FOR INFO		WRITE FOR INFO		WRITE FOR INFO	
5	OILER	155x17		155x17		155x17	
6	COIL SPRING	162x54		162x54		162x54	
7	STEEL BALL	172x12		172x12		172x12	
8	SPINDLE (2-9-10)	*AS1217NH1		*AS1217NH1		*AS1217NH1	
9	BINDER SHOE	PT1080NK1		PT1080NK1		PT1080NK1	
10	SET SCREW	126x505		126x505		126x505	
11	CLAMP (12-13)	*AS1216NK1		*AS1216RT1		*AS1216FH1	
12	JAM NUT	139x23		139x23		139x25	
13	SET SCREW	122x518		122x524		122x624	
14	WASHER	161x63		161x12		161x16	
15	CAP SCREW	114x120		114x120		114x228	
16	STOP SCREW	PT1236K1					

SERIAL NUMBER OF LATHE AND UNIT  
CODE NUMBER "MUST" ACCOMPANY ORDER



**FOUR POSITION CROSS SLIDE STOP**  
FOR 9" 10K , 10" , 13" , 16" , SERIES 900 , 1000 AND 2H

\* AVAILABLE ONLY AS SUB-ASSEMBLY. PARTS INCLUDED ARE INDICATED BY THE ITEM NUMBERS APPEARING IN PARENTHESIS AFTER PART NAME.

ITEM NO.	PART NAME	10K ,		13"		16" & 2H	
		PART NO.		PART NO.		PART NO.	
1	CAP SCREW	114x116		114x120		114x120	
2	RUSHING	PT1223NR2		PT1223TH1		PT1223TH1	
3	STOP SCREW NUT	PT811NH1		PT811NH1		PT811NHQ	
4	TAKE UP NUT	PT1222NH1		PT1222NH1		PT1222NH1	
5	FRAME	WRITE FOR INFO		WRITE FOR INFO		WRITE FOR INFO	
6	SET SCREW	122x102		122x102		122x102	
7	STEEL BALL	172x12		172x12		172x12	
8	COIL SPRING	162x1		162x1		162x1	
9	SET SCREW	126x505		126x505		126x505	
10	SPINDLE (4-11-12)	*AS1221NH1		*AS1221NH1		*AS1221NH1	
11	SHOE	PT1078NK1		PT1078NK1		PT1078NK1	
12	SET SCREW	120x904		120x904		120x904	
13	CAP SCREW	112x132		112x224		112x428	
14	WASHER	161x63		161x16		161x26	
15	STOP SCREW	PT1224NH1		PT1224NH1		PT1224NH1	