

DIAGRAM I

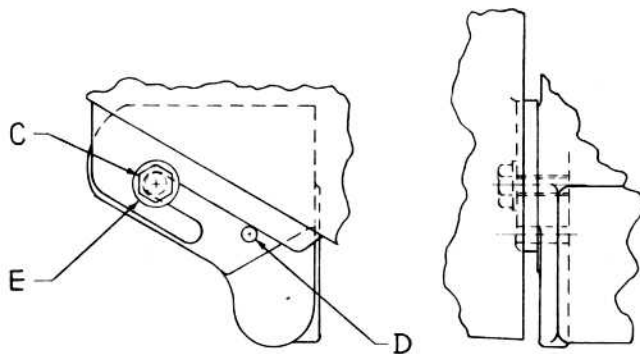


DIAGRAM II

### HOW TO MOUNT BELT GUARD ON 9" SMALL HORIZONTAL DRIVE STANDARD (FOR $\frac{1}{4}$ , $\frac{1}{3}$ , $\frac{1}{2}$ H.P. SMALL FRAME MOTORS)

PLACE GUARD "A" AGAINST HORIZONTAL DRIVE STANDARD "B" AS IN DIAGRAM I MAKING SURE THAT GUARD IS IN SUCH A POSITION WHICH WILL ALLOW ENOUGH CLEARANCE AT THE BOTTOM FOR THE MOTOR PULLEY WHEN MOTOR IS LOWERED FOR THE MAXIMUM TAKE UP OF MOTOR "V" BELT.

NOW CENTER PUNCH HORIZONTAL STANDARD FOR HEXAGON HEAD CAP SCREW "C" AND FOR PIN "D" IN LOCATIONS INDICATED IN DIAGRAM II.

REMOVE BELT GUARD. DRILL AND TAP FOR  $\frac{3}{8}$  -16 CAP SCREW "C". DRILL AND REAM (PRESS FIT) FOR  $\frac{5}{16}$  DIA. GUARD REST PIN "D."

PRESS PIN "D" IN HORIZONTAL STANDARD ALLOWING END TO PROTRUDE FOR GUARD LUG TO REST UPON. PLACE GUARD UP TO STANDARD AS IN DIAGRAM II AND TIGHTEN SCREW "C" IN TAPPED HOLE WITH WASHER "E" BETWEEN GUARD LUG AND SCREW HEAD.

UNIT HORIZONTAL MOTOR DRIVE			
SHEET NO. 1		NO. SHEETS 1	
SCALE			
<b>SOUTH BEND LATHE</b>			
SOUTH BEND, IND.			
DRAWN BY A. HACKER	C'D BY C. Z.	TRACED BY	C'D. BY
11-23-51	11-26-51		