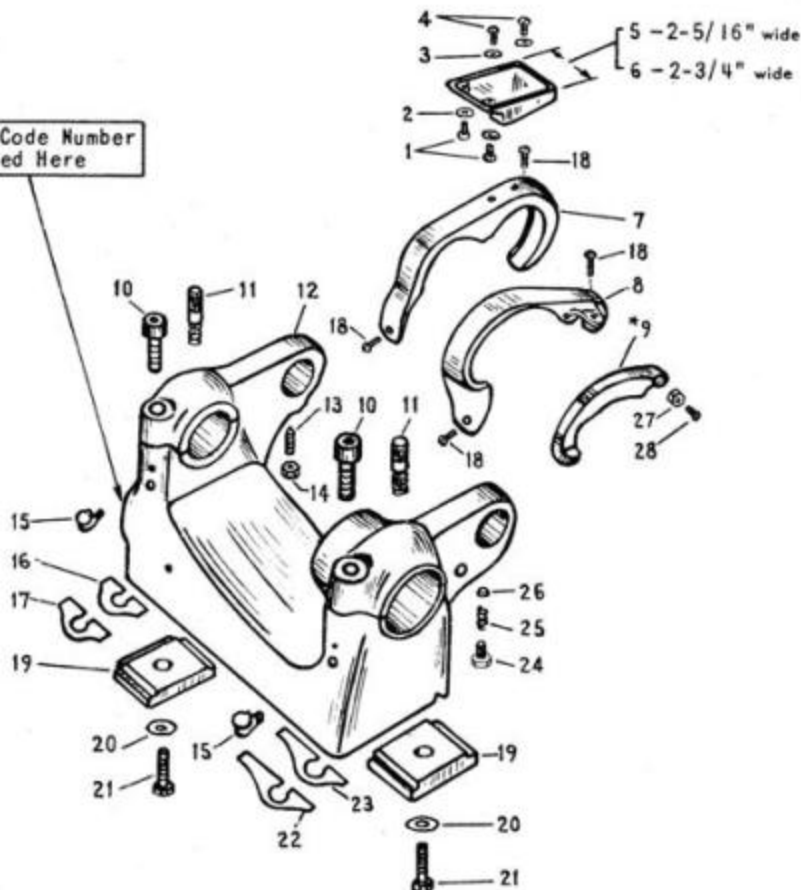


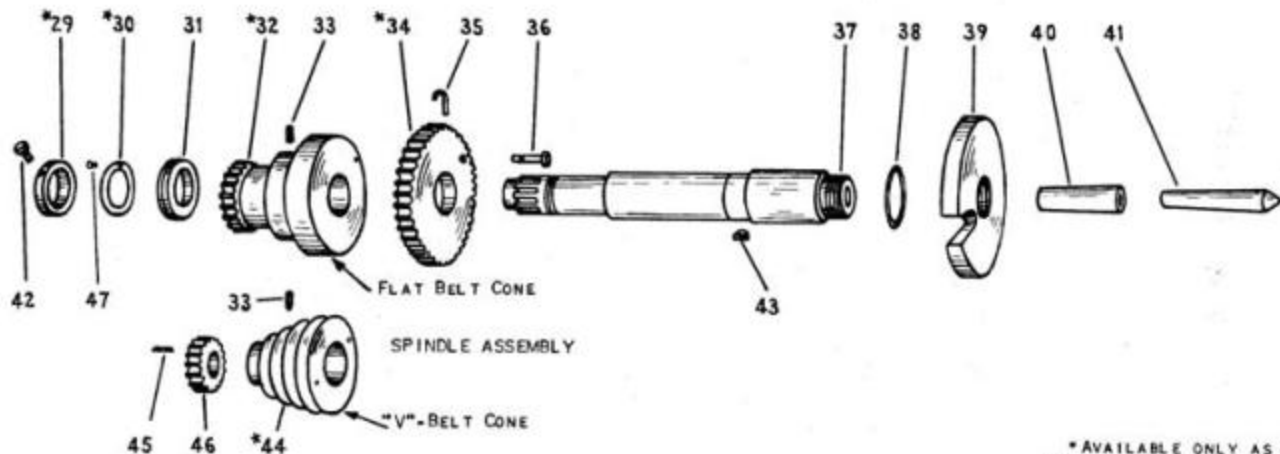
SERIAL NUMBER OF LATHE AND UNIT
CODE NUMBER 'MUST' ACCOMPANY ORDER

Unit Code Number
Stamped Here

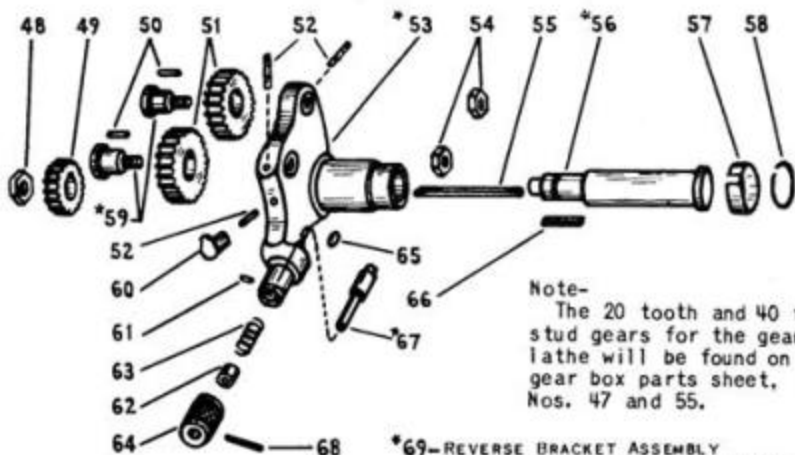


9" HORIZONTAL DRIVE HEADSTOCK
Model A, B, & C

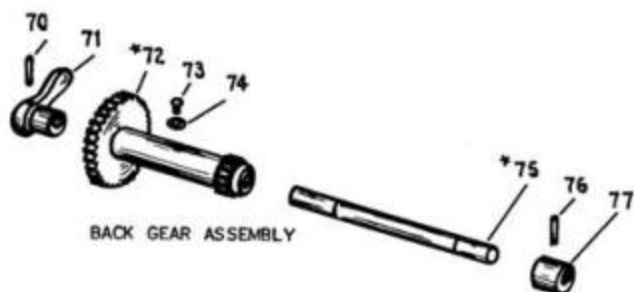
ITEM NO.	PART NO.	PART NAME
1	101X606	SCREW
2	180X300	WASHER
3	180X204	WASHER
4	101X306	SCREW
5	PT1943N2	BRACKET, 2-5/16"
6	PT1942N1	BRACKET, 2-3/4"
7	PT148N1	QUILL GUARD
8	PT149N1	BULL GEAR GUARD
9	*AS362N1	SAFETY GUARD (27-28)
10	114X220	SCREW
11	AS373N1	CAPILLARY OILER
12	PT10N4	HEADSTOCK
13	PT377NR1	STOP SCREW
14	PT1058NR1	NUT
15	PT2677NR1	OILER
16	PT365N1	LAM. SHIM
17	PT366N1	SOLID SHIM
18	PT1150NK1	SCREW
19	PT13NK1	CLAMP
20	PT1672NK1	WASHER
21	112X1112	SCREW
22	PT363N1	LAM. SHIM
23	PT364N1	SOLID SHIM
24	PT376NR1	SCREW
25	PT374NR1	SPRING
26	PT1075NR1	SHOE
27	138X18	NUT
28	101X316	SCREW
29	*AS25NK1	TAKE UP NUT (*30-42)
30	*AS26NK1	TAKE UP WASHER (47)
31	PT207NK1	THRUST BEARING
32	*AS14NK1	CONE (33)
33	PT381NH1	OIL PLUG SCREW
34	*AS15NK1	BULL GEAR (35-36)
35	PT367NR1	SPRING
36	PT214NR2	PLUNGER
37	PT200N2	SPINDLE
38	PT370N2	PROTECTING RING
39	CL2175NK	FACE PLATE 5 1/8" O.D.
40	CL205NK	SPINDLE SLEEVE
41	CE2401	CENTER
42	PT382NK1	SCREW
43	PT2090	KEY
44	*AS432NK2	CONE (33-45-46)
45	160X23	PIN
46	PT433NK1	"V" CONE PINION
47	PT383NR1	PIN



* AVAILABLE ONLY AS SUB-
ASSEMBLY. PARTS INCLUDED
ARE INDICATED BY THE ITEM
NUMBERS APPEARING IN PAR-
ENTHESIS AFTER PART NAME.



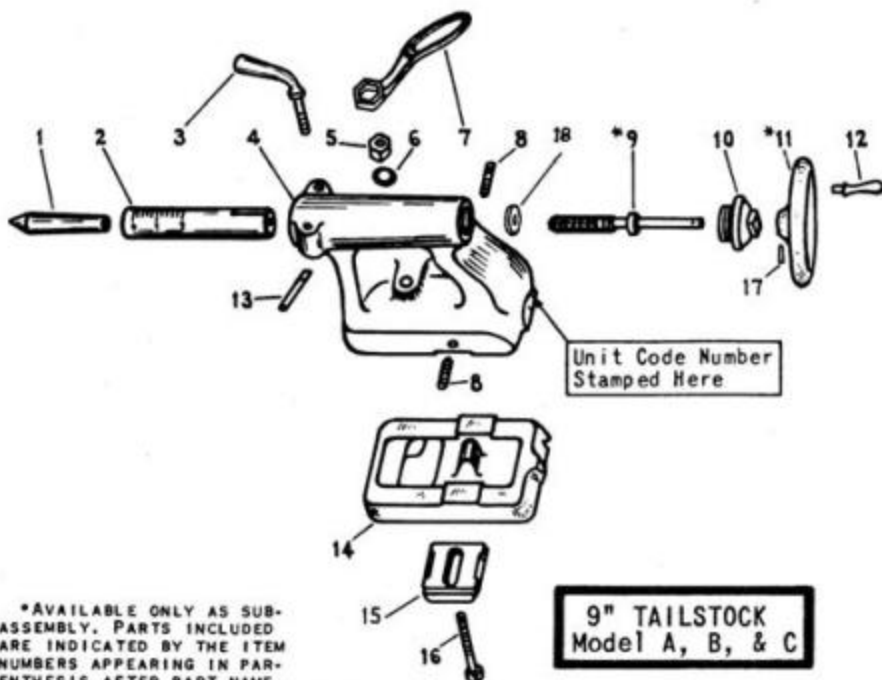
REVERSE BRACKET ASSEMBLY



BACK GEAR ASSEMBLY

**9" HORIZONTAL DRIVE HEADSTOCK
Model A, B, & C**

SERIAL NUMBER OF LATHE AND UNIT
CODE NUMBER 'MUST' ACCOMPANY ORDER



**9" TAILSTOCK
Model A, B, & C**

ITEM NO.	PART NO.	PART NAME
48	137X29	NUT
49	PT28NK1	REVERSE GEAR
50	256X1	FELT WICK
51	PT27K32NK1	TWIN GEAR
52	256X14	FELT WICK
53	*A5635K2	REVERSE BRACKET (52-60-65-*67)
54	139X25	NUT
55	256X3	FELT WICK
56	*A5637NK1	REVERSE SHAFT (48)
57	PT2585K2	LOCK BUSHING
58	PT409T1	SNAP RING
59	*A5229K1	TWIN GEAR STUD (50-54)
60	155X38	OILER
61	PT2584K1	PIN
62	PT2586K1	BUSHING
63	162X35	SPRING
64	PT88NK2	PLUNGER KNOB
65	PT1501	PLUG
66	164X85	KEY
67	*A5640K1	REVERSE PLUNGER (61-62-63-64-68)
68	160X10	PIN
69		REV. BRACKET ASSEMBLY (49-51-*53-55-*56-57 58-*59-66)
70	*AX5635K2	TAPER PIN
71	PT24NK2	ORDER ITEM 75
72	*AS361NK2	BACK GEARS (73-74)
73	PT1151N1	SCREW
74	PT378NK1	WASHER
75	*AS202NK1	ECCENTRIC SHAFT (70-71-76-77)
76	168X310	TAPER PIN
77	PT438NK1	ORDER ITEM 75

ITEM NO.	PART NO.	PART NAME
1	CE2401	CENTER SPINDLE
2	PT201NR1	LEVER
3	PT54NK1	T. S. TOP
4	PT50N1	NUT
5	PT283NK1	WASHER
6	PT2861NK1	T. S. WRENCH
7	CE2653N	SCREW
8	PT278NK1	T. S. SCREW (9A)
9	*A5226N2	T. S. NUT
10	PT52N1	T. S. HANDWHEEL (12-17)
11	*A553NK1	HANDLE
12	PT1480	SPINDLE KEY
13	PT286NR1	T. S. BASE
14	PT51N1	CLAMP
15	PT56NK2	CLAMP BOLT
16	143X214	PIN
17	168X106	RUBBER WASHER
18	PT3554NR1	