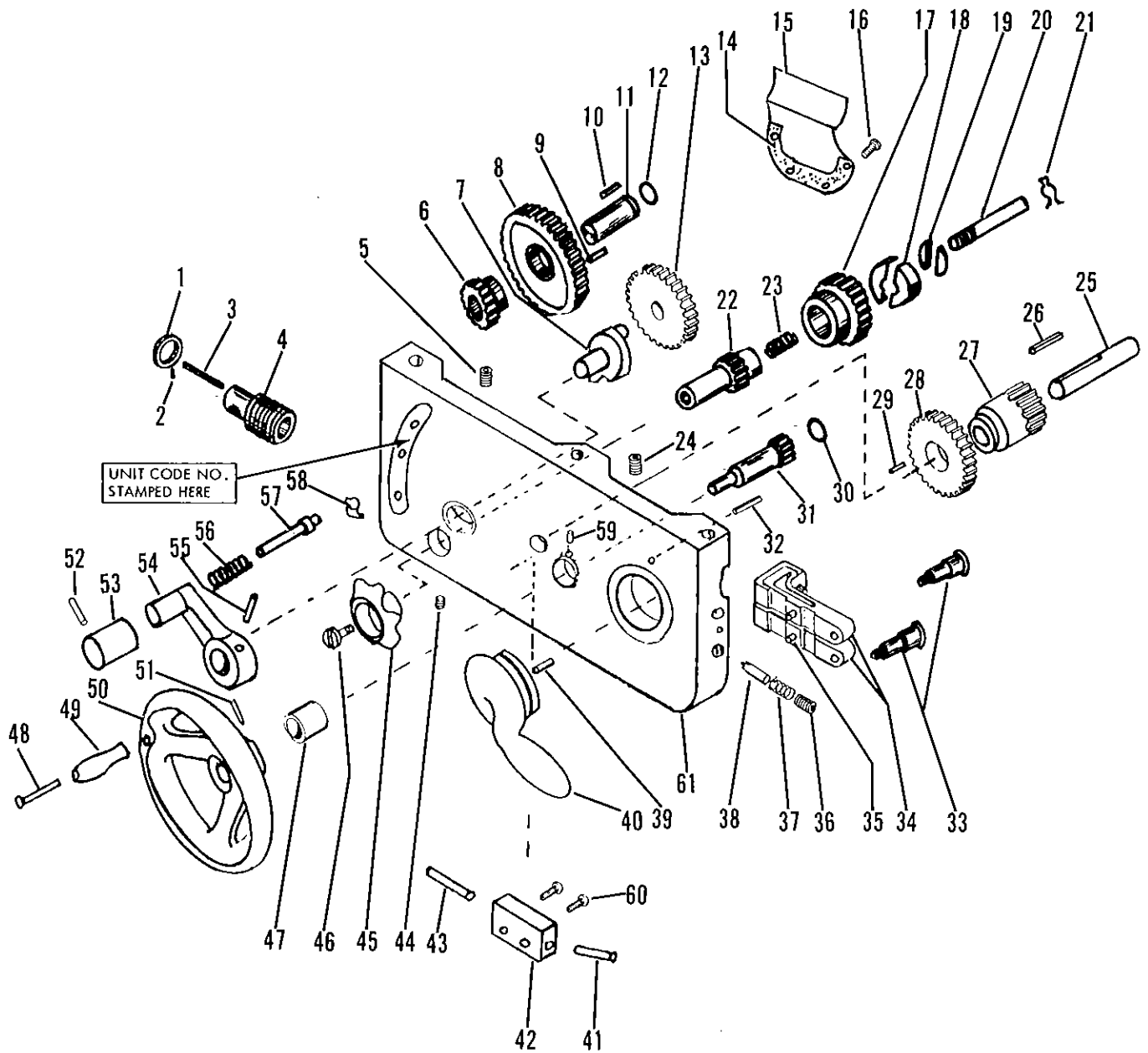


10K GAP APRON



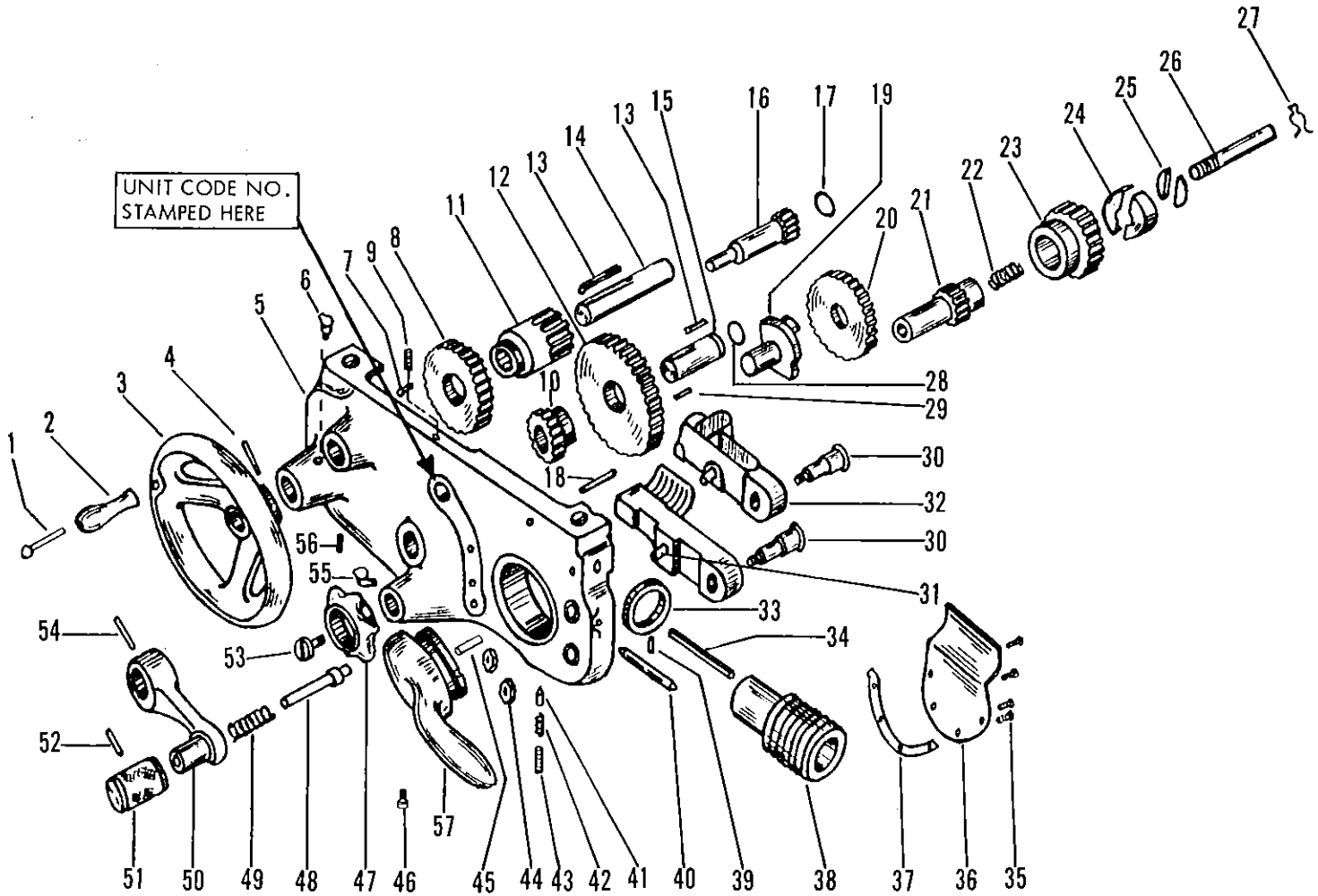
UNIT CODE NO.  
STAMPED HERE

SERIAL NO. OF LATHE AND  
UNIT CODE NO. MUST  
ACCOMPANY ORDER.

Parts illustrated on this page are for  
unit code no. APG101NK, APH101NK

ITEM NO.	PART NO.	DESCRIPTION	QUAN.
1	PT208NK1	Collar	1
2	159 x 37	Roll Pin - 1/8 x 3/8	1
3	PT690NK1	Key	1
4	*AS203NK1	Worm (1, 2, 3)	1
5	120 x 908	Headless Set Screw 10-24x1/2	1
6	*AS87NK1	Pinion Assy. (8, 9) - 22 Teeth	1
7	PT2876NK1	Shifter	1
8	PT85NK2	Order item 6	1
9	160 x 18	Straight Pin - 1/8 x 5/16	2
10	256 x 3	Felt Wick - 3/32 x 3/16 x 3/4	1
11	*AS231NK2	Shaft (12)	1
12	165 x 62	Retaining Spring	1
13	PT86NK1	Idler Gear - 45 Teeth	1
14	PT2885NK1	Gasket	1
15	*AS2884NK1	Oil Trough (14, 16)	1
16	101 x 104	Rd HD Mach Screw - 8-32 x 1/4	4
17	PT77NK1	Worm Gear - 36 Teeth	1
18	PT352NK1	Shoes (Pair)	1
19	PT353NK1	Expanders (Pair)	1
20	*AS223NK2	Clutch Screw (21, 46)	1
21	PT349NK1	Retainer Clip	1
22	PT80NK1	Clutch Sleeve - 21 Teeth	1
22-A	*PA80NK1	Complete Clutch Assy. (17, 18, 19, 20, 21, 22, 23, 45, 46)	1
23	162 x 19	Coil Spring	1
24	120 x 108	Hol HD Cup PT Set Screw - 5/15 - 18x1/2	1
25	*AS228NK2	Stud (26)	1
26	256 x 3	Oil Wick - 3/32 x 3/16 x 2-1/8	1
27	PT204NK2	Order item 28	1
28	*AS76NK1	Rack Pinion Gear Assy. (27, 29) 43 Teeth	1
29	160 x 18	Straight Pin - 1/8 x 5/16	1
30	PT409NK1	Retaining Spring	1
31	*AS2890NK1	Pinion (32)	1
32	PT2887NK1	Oil Tube	1
33	PT2886NK1	Shoulder Screw for Half Nut	2
34	*AS2878NK1	English Half Nut Assy. (Pair) (35)	1
34-A	*AS2894NK1	Metric Half Nut Assy. (Pair) (35)	1
35	PT172NK1	Half Nut Pin	2
36	120 x 105	Hol HD Cup PT Set Screw - 5/16 - 18x5/16	1
37	162 x 5	Coil Spring	1
38	PT351NK1	Pin	1
39	160 x 76	Straight Pin - 1/4 x 5/8	1
40	*AS2883NK1	Half Nut Cam (39)	1
41	PT2888NK1	Camlock Plunger	1
42	PT2889NK1	Plunger Block	1
43	PT2881NK1	Feed Lock Plunger	1
44	152 x 79	Oil Drain Plug - 1/16x27 NPTF	1
45	PT82NK1	Clutch Knob	1
46	PT355NF1	Clutch Knob Screw	1
47	PT2877NK1	Handwheel Sleeve	1
48	PT1241	Handle Stud	1
49	PT1491	Handle	1
50	*AS1263NK1	Handwheel Assy. (48, 49, 51, 30, 31)	1
51	168 x 108	Taper Pin	1
52	160 x 10	Straight Pin - 3/32 x 3/4	1
53	*AS88NK2	Plunge Knob Assy. (51, 56, 57)	1
54	*AS84NK1	Lever Assy. (7, *53, 55)	1
55	168 x 210	Taper Pin - #1 x 1-1/4	1
56	162 x 35	Coil Spring	1
57	PT89NK1	Plunger	1
58	PT2677NR1	Elbow Oiler	1
59	155 x 16	Ball Oiler	1
60	114 x 8	Soc. HD Cap Screw - 1/4 - 20x1/2	2
61	PT2880NK1	Apron, machined casting (no other parts)	1

10 K APRON



SERIAL NO. OF LATHE AND  
UNIT CODE NO. MUST  
ACCOMPANY ORDER.

For unit code  
A101NKH, A201NKH

ITEM NO.	PART NO.	DESCRIPTION	QUAN.
1	PT1241	Stud	1
2	PT1491	Handle	1
3	*AS1263NK1	Handwheel Assy. (1, 2, 4, 16, 17)	1
4	168 x 108	Taper Pin	1
5	PT70NK1	Apron	1
6	155 x 23	Oiler	1
7	160 x 18	Straight Pin - 1/8 x 5/16	2
8	*AS76NK1	Rack Pinion Gear Assy. - 43 Teeth (7, 11) (will not fit Model "C")	1
9	122 x 208	Headless Cup PT Screw - 10 - 24x1/2	1
10	*AS87NK1	Pinion Assy. (12, 29) - 22 Teeth	1
11	PT204NK2	Order item *8 - 14 Teeth	1
12	PT85NK2	Order item *10 - 57 Teeth	1
13	256 x 3	Felt Wick - 3/32 x 3/16 x 3/4	2
14	*AS228NK2	Stud (13)	1
15	*AS231NK2	Shaft (28)	1
16	*AS225NK1	Pinion (17) - 14 Teeth	1
17	PT409NK1	Spring	1
18	PT2854NK1	Oil Tube	1
19	PT83NK1	Shifter	1
20	PT86NK1	Idler Gear - 45 Teeth	1
21	PT80NK1	Clutch Sleeve - 21 Teeth	1
21-A	*PA80NK1	Complete Clutch Assy. (21,22,23,24,25,26,27,47,53)	1
22	162 x 19	Spring	1
23	PT77NK1	Worm Gear - 36 Teeth	1
24	PT352NK1	Shoes (Pair)	1
25	PT353NK1	Expanders (Pair)	1
26	*AS223NK2	Clutch Screw (27, 53)	1
27	PT349NK1	Retainer Clip	1
28	165 x 62	Retainer Spring	1
29	160 x 18	Straight Pin - 1/8 x 5/16	1
30	*AS350NK1	Shoulder Screw for Half Nut (44)	2
31	PT172NK1	Pin	2
32	*AS72NK1	Half Nut Assy. (31) English	1
32-A	*AS2236NK1	Metric Half Nut Assy. (31)	1
33	PT208NK1	Collar	1
34	PT690NK1	Key	1
35	101 x 104	Button HD Hex Soc. Screw - 8-32 x 1/4	4
36	*AS227NK1	Trough (36, 37)	1
37	PT412NK1	Gasket	1
38	*AS203NK1	Worm (33, 34, 39)	1
39	159 x 37	Roll Pin - 1/8 x 5/16	1
40	PT97NK2	Plunger	1
41	PT351NK1	Pin	1
42	162 x 5	Spring	1
43	122 x 604	Headless Cup PT Set Screw - 5/16 - 18x1/4	1
44	PT1072-2	Hex Nut	2
45	160 x 76	Straight Pin - 1/4 x 5/8	1
46	PT1511	Oil Drain Plug Sq. HD - 1/8 NPT	1
47	PT82NK1	Clutch Knob	1
48	PT89NK1	Order item *51	1
49	162 x 35	Spring	1
50	*AS84NK1	Lever Assy. (19, *51, 54)	1
51	*AS88NK2	Plunger Knob Assy. (48, 49, 52)	1
52	168 x 210	Taper Pin	1
53	PT355NF1	Clutch Knob Screw	1
54	160 x 10	Straight Pin - 3/32 x 3/4	1
55	PT2677NR1	Oiler	1
56	120 x 108	Hex HD Cup PT Set Screw - 5/16 - 18x1/2	1
57	*AS74NK1	Half Nut Cam (45) also fits model "C" apron	1