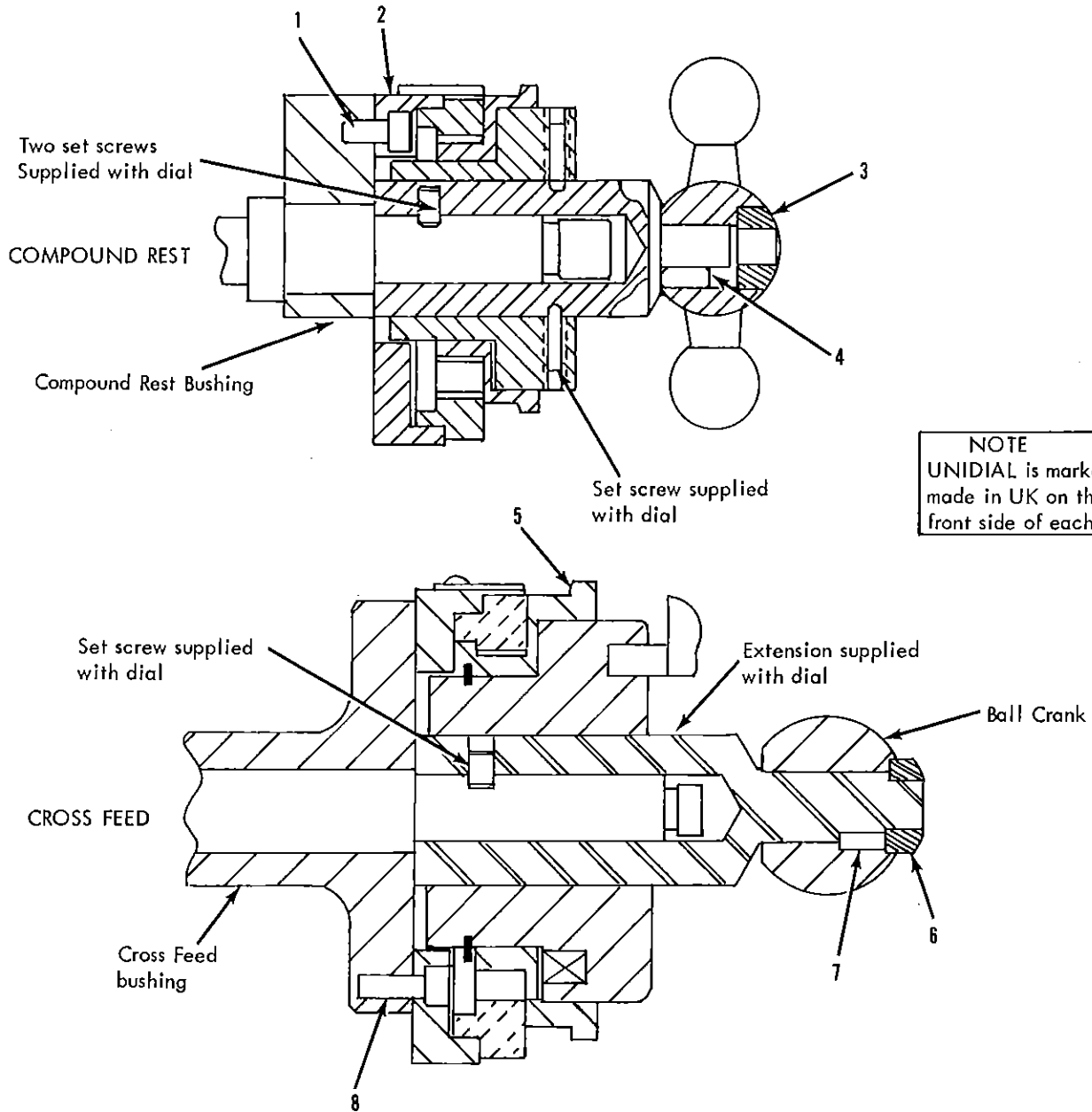


INCH-METRIC DIALS---UNIDIAL

FOR 10K, 10", 13", 16", 16/24"



**NOTE**  
UNIDIAL is marked  
made in UK on the  
front side of each

ITEM NO.	PART NO.				DESCRIPTION	QTY
	10K	10"	13"	16" & 16/24"		
1	CL2552KL	CL2552KL	CL2552TH	CL2552TH	Inch-Metric assy. for Compound Rest	1
	CL2551K	CL2551L	CL2551T	CL2551H	Inch-Metric assy. for Cross Feed	1
2	114 x 606	114 x 606	114 x 606	114 x 606	Soc Hd cap screw 10-32 x 3/8	3
3	PT10721KL1	PT10721KL1	PT10724TH1	PT10724TH1	Inch-Metric Dial	1
4	PT295NR1	PT295NR1	PT295T1	PT295T1	Retaining nut	1
5	160 x 17	160 x 17	160 x 17	160 x 17	Straight pin 1/8 x 1/4	1
6	PT10722K1	PT10723L1	PT10725T1	PT10719HV1	Inch-Metric dial	1
7	PT295NR1	PT295NR1	PT295T1	PT295FH1	Retaining nut	1
8	160 x 19	160 x 19	160 x 19	160 x 19	Straight pin 1/8 x 3/8	1
	114 x 608	114 x 608	114 x 608	160 x 608	Soc Hd cap screw 10-32 x 1/2	3