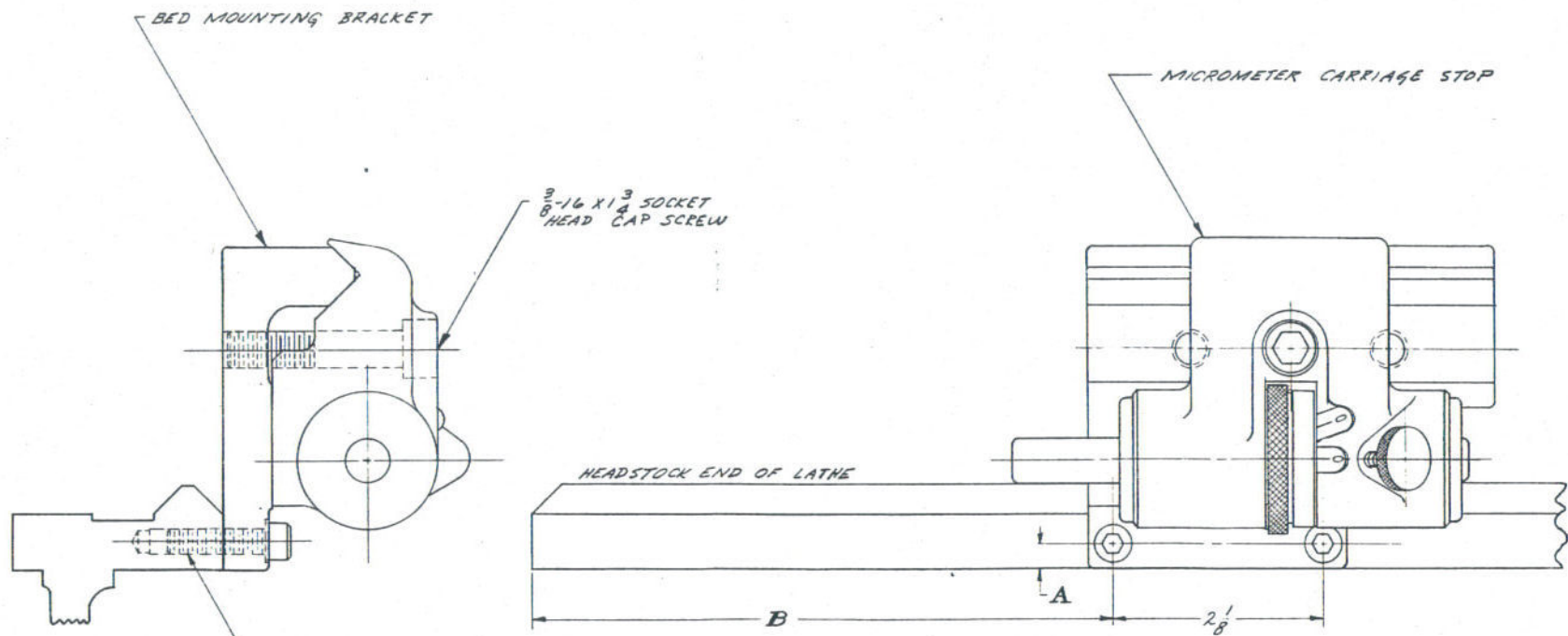


MOUNTING INSTRUCTIONS—MICROMETER CARRIAGE STOP
WHEN WORKING CLOSE TO SPINDLE NOSE.

LATHE SIZE	A	B
10"	1/4	5 7/8
13"	3/8	9 1/16



3/8-16 X 1 3/4 SOCKET
HEAD CAP SCREW

13/64 DRILL 7/8 DEEP TAP 1/4-20 3/4 DEEP
FOR TWO 3/8-20 X 1" SOCKET HEAD CAP SCREWS.

10" & 13"

						UNIT	MICROMETER CARRIAGE STOP
						SHEET NO.	1 NO. SHEETS 1
						SCALE	
						SOUTH BEND LATHE, INC.	
						SOUTH BEND, IND., U.S.A.	
						DRAWN BY	C'KD. BY
						FULTZ	
2-1-57		10" ONLY		F.		TRACED BY	C'KD. BY
DATE	LET.	WAS	DR.	NOTICE	6-19-56		