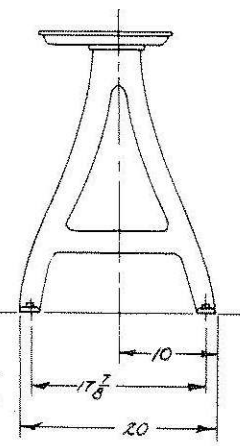
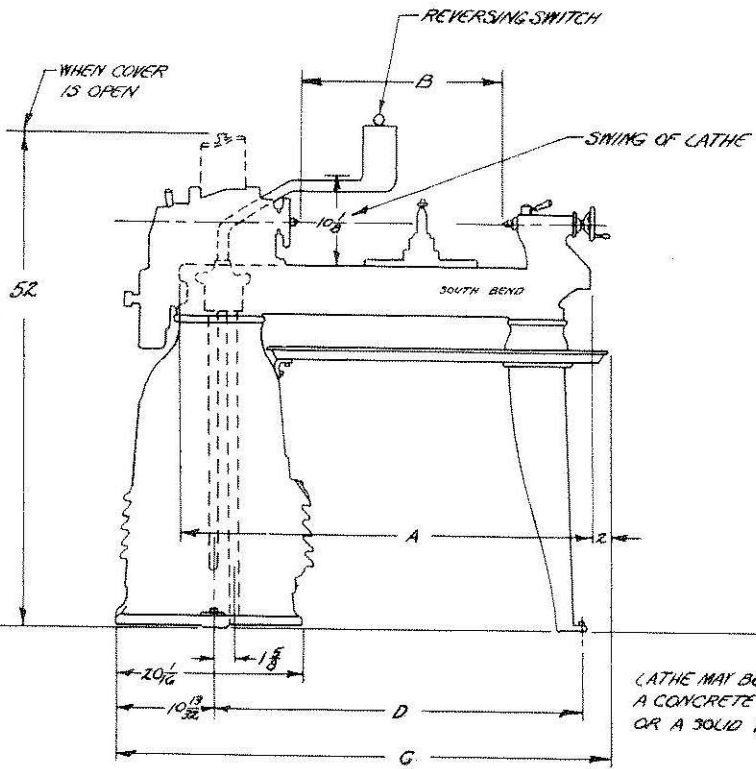
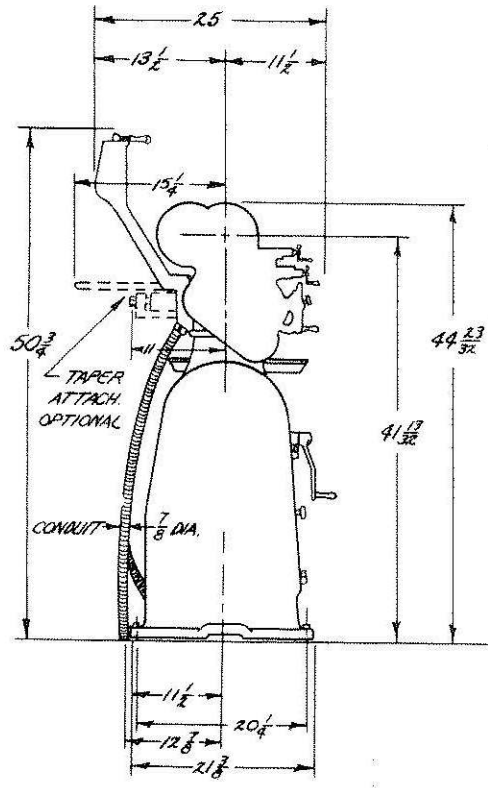


1425 R.P.M. MOTOR
 DOUBLE DRIVE SPINDLE SPEEDS
 MOTOR PULLEY LARGE STEP
 BACK GEAR OPEN BELT
 101-159-257 554-869-1406
 MOTOR PULLEY SMALL STEP
 BACK GEAR OPEN BELT
 64-99-162 350-545-888

1725 R.P.M. MOTOR
 DOUBLE DRIVE SPINDLE SPEEDS
 MOTOR PULLEY LARGE STEP
 BACK GEAR OPEN BELT
 98-155-245 560-855-1340
 MOTOR PULLEY SMALL STEP
 BACK GEAR OPEN BELT
 55-85-130 300-460-725

COUNTERSHAFT SPEED 325-605 R.P.M.
 3/4 H.P. MOTOR - 1725 R.P.M.
 COUNTERSHAFT SPEED 379-600 R.P.M.
 3/4 H.P. MOTOR - 1425 R.P.M.



LATHE MAY BE SET ON A CONCRETE FOUNDATION OR A SOLID WOOD FLOOR

LENGTH OF BED	BETWEEN CENTERS	LENGTH OVER ALL	BETWEEN LEG BOLTS		
A	B	C	STD. CHANGE	QUICK CH.	D
36	14 3/4	46	46		34
42	20 3/4	51	51		39
48 3/8	27 3/8	57	57		45
56	34 3/4	65	65		53

NOTE ALL DIMENSIONS SHOWN ON THIS DRAWING ARE APPROXIMATE

UNIT 10 1/2 IN. UNDERWEATH CABINET LATHE	SHEET NO.		NO. SHEETS	
SCALE				
SOUTH BEND LATHE WORKS				
SOUTH BEND, IND., U.S.A.				
DRAWN BY W. DEBARD	C'D. BY J. H.	TRACED BY T. U.	C'KG. BY C. E.	
DATE 1/17-24	NOTICE SPEEDS REVISED	C.E. 2511	9-26-90	6-15-90
DATE	LET.	WAS	DR.	NOTICE
			9-8-50	9-11-50