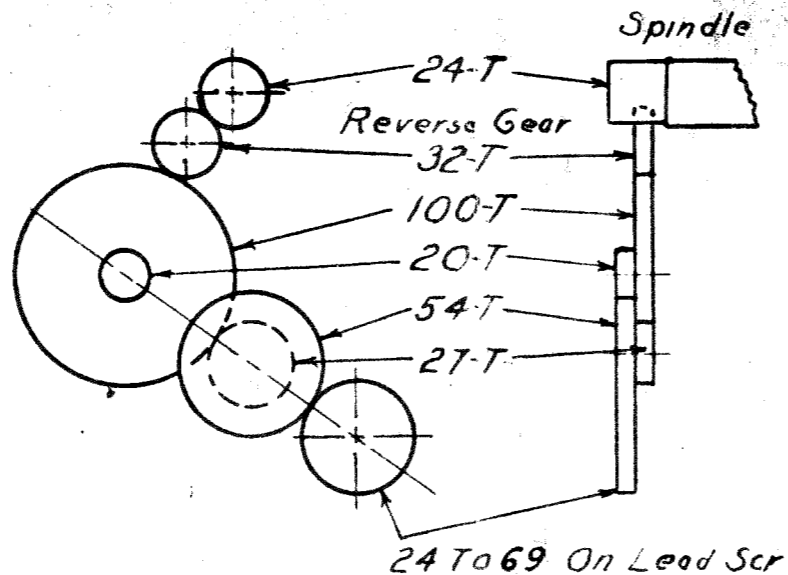


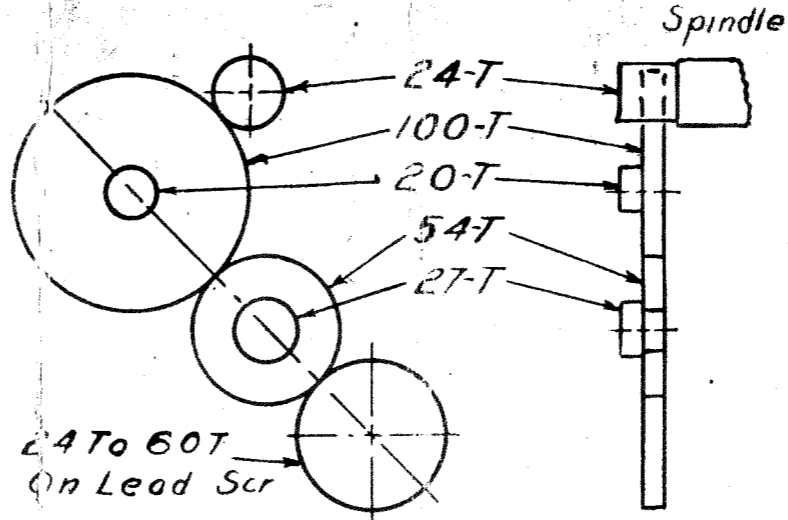
COMPOUND GEARING 2-1

Arrangement for 4-5-6-7-9 & 11 1/2 thds. Per Inch Right Hand



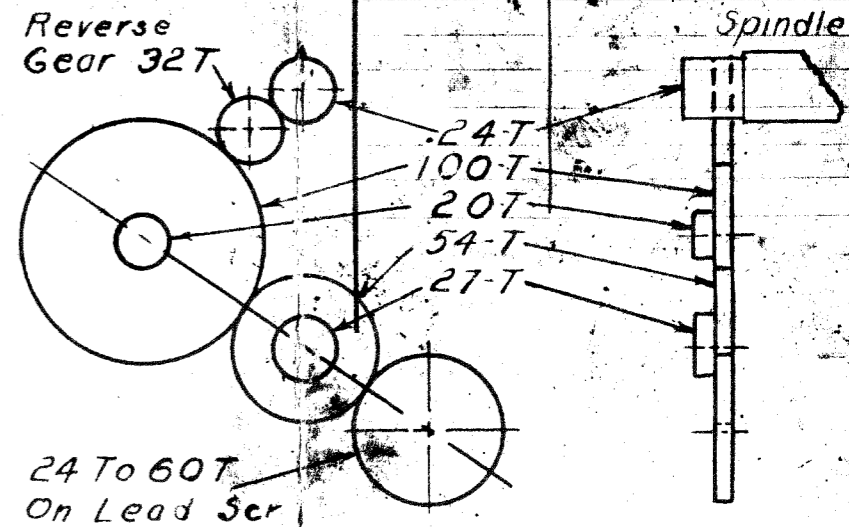
COMPOUND GEARING 2-1

Arrangement for 4-5-6-7-9 & 11 1/2 thds. Per Inch Left Hand



SIMPLE GEARING

Arrangement for 8-10-11-12-13-14-16-18 & 20 Threads Per Inch Right Hand



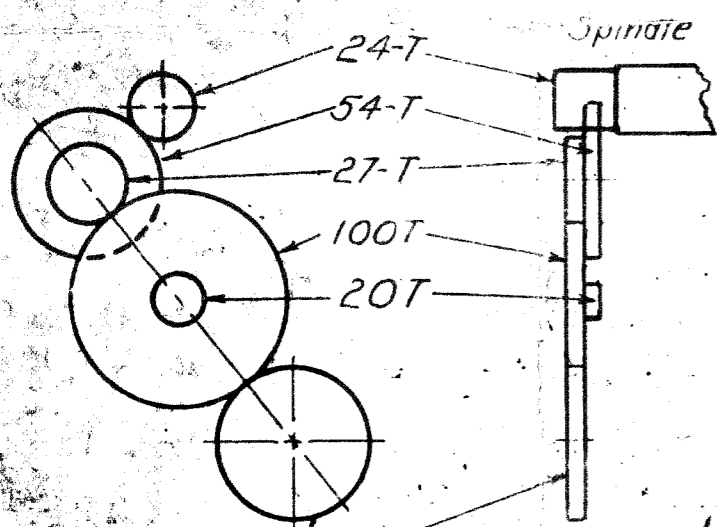
SIMPLE GEARING

Arrangement for 8-10-11-12-13-14-16-18-20 Threads Per Inch Left Hand

REFERENCE 28 C

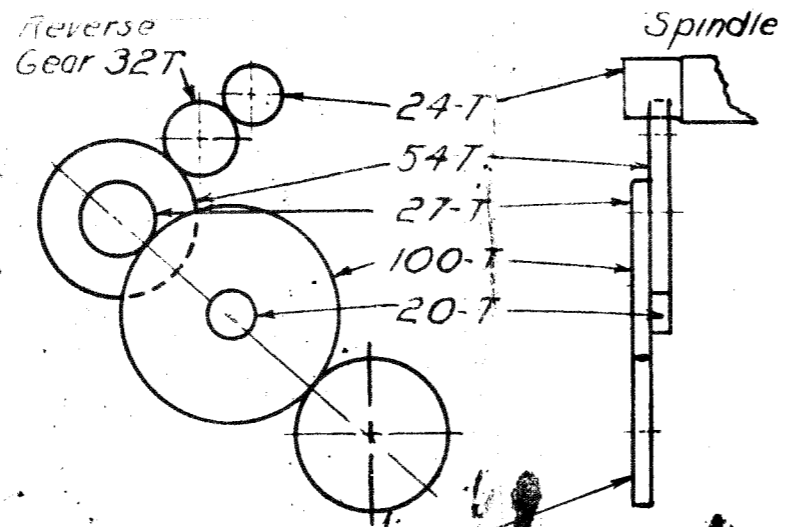
PART NO. STYLES USED ON

Spindle



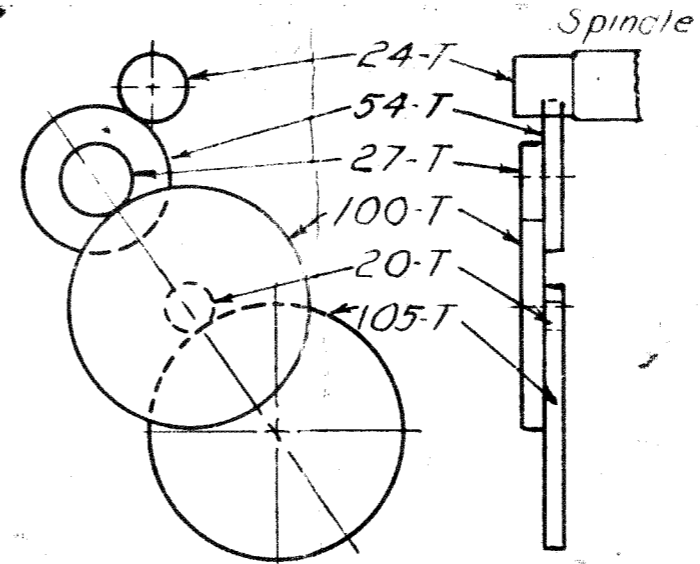
COMPOUND GEARING 1-2

Arrangement For 22-24-26-28-30-32-36-40 Thds. Per Inch Right Hand



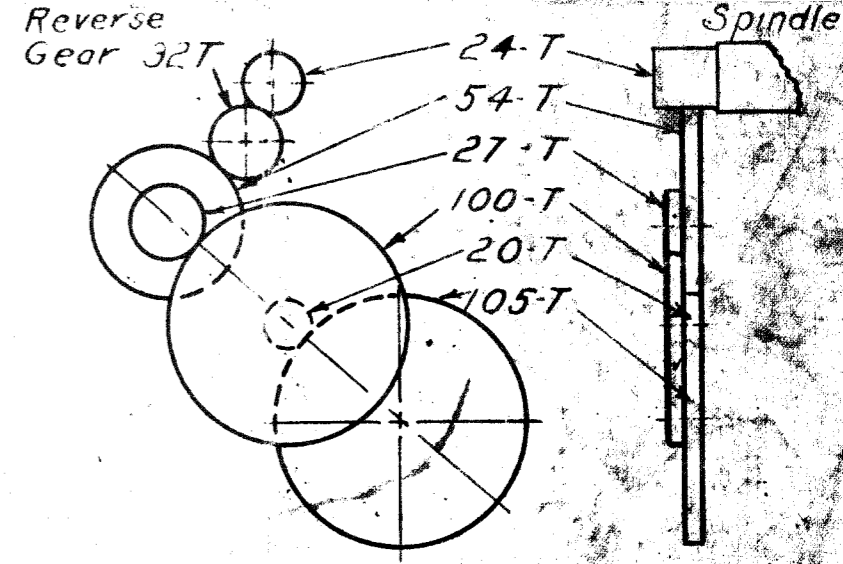
COMPOUND GEARING 1-2

Arrangement for 22-24-26-28-30-32-36-40 Thds Per Inch Left Hand



TURNING FEED

350 Per Inch Right Hand Feed Per Rev. .0028



TURNING FEED

350 Per Inch Left Hand Feed Per Rev. .0028

9W LATHE DWG. NO 28C													
UNIT STD. CH GEAR COMBINATIONS													
SCALE QUARTER													
SOUTH BEND LATHE WORKS SOUTH BEND, IND., U.S.A.													
DATE		LET.		NATURE OF CHANGE		DR.		CK.		AP.		NOTICE NO.	
8-21-34		11/2 thd. corrected		from 1 to 2 to 2 1/2		JM		JED		JJM		4-18-34	